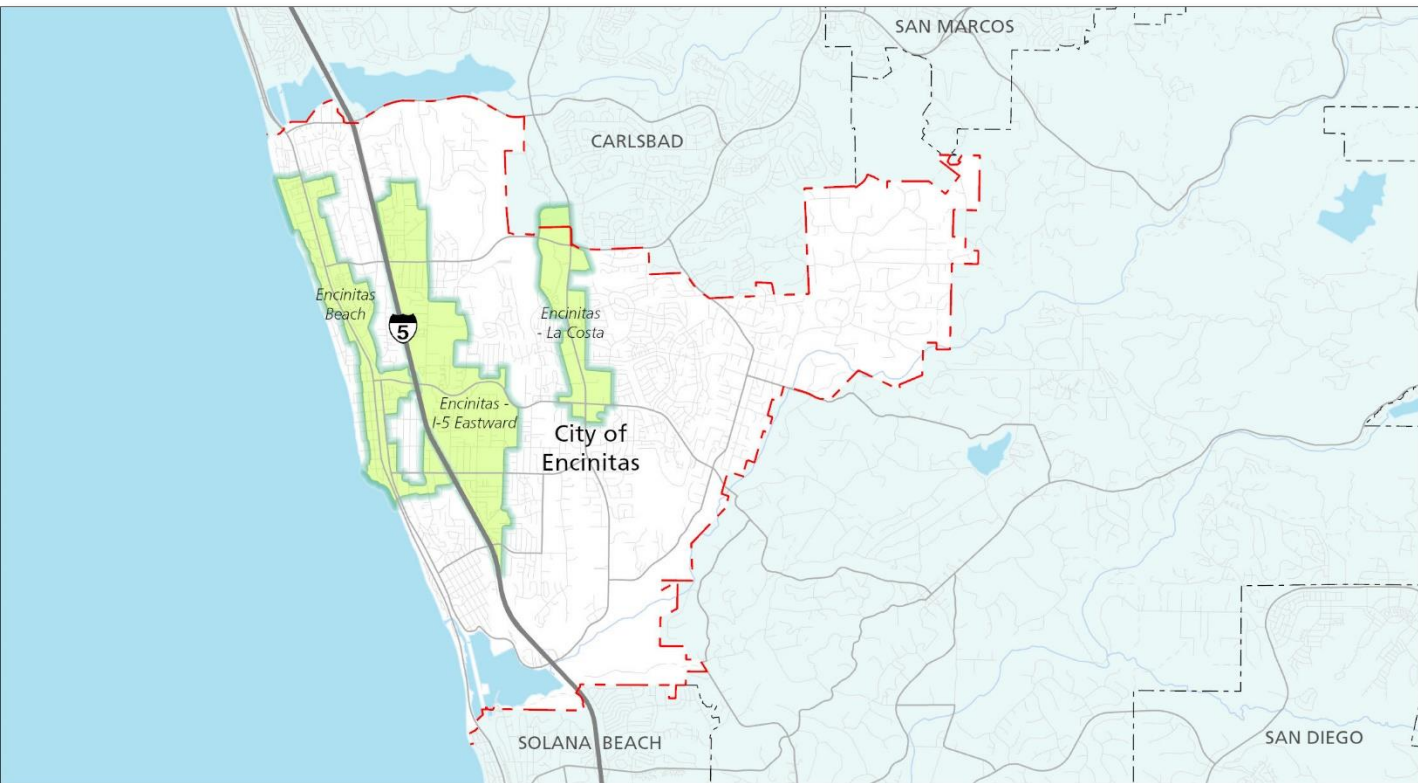


Employment in the San Diego region

City of Encinitas



Key contact

Ray Major
Chief Economist
(619) 595-5668
ray.major@sandag.org

August 2019

Fast facts

City of Encinitas

28,450	employees
1.9%	region's employees
19.6	land area (square miles)
1,453.0	employees per square mile

Table of Contents

The statistics	3
The maps	5
Appendix A: Jurisdiction employment methodology, data sources, and other things to consider	9
Appendix B: Jurisdiction resident profile	11
Appendix C: Employment centers located within the City of Encinitas	15

Background

The San Diego region is a growing and dynamic place to live and work. As the community, policy makers, and other stakeholders collaborate regarding how we create transportation options for our residents that are competitive and environmentally responsible, it is essential we utilize the data we have regarding where people live and work to invest in strategies that will best serve our communities.

In spring 2019, the Data, Analytics, and Modeling Department of SANDAG applied data analytics to multiple data sources to better understand where employment centers are in the region, where the employees in these areas commute from, and what their commutes look like. The result of this analysis were packets describing over 70 employment centers across the San Diego region.

As a next step in this series, this packet describes employment in the **City of Encinitas**, including maps showing where individuals who work in the City of Encinitas live and how far they have to travel to get to their places of employment, where residents of Encinitas travel to work, as well as a map that shows all of the travel to and from the City of Encinitas regardless if for work, recreation, or any other reason. SANDAG 2018 demographic and socioeconomic estimates for the population of Encinitas are included (Appendix B), as are the 3 packets for employment centers located all or partially in the City of Encinitas (as shown in the red outline on the cover of this packet and Appendix C). Because employment centers can cross jurisdictional boundaries and not all the employees in a jurisdiction are included in an employment center, it is important to note the number of employees in these 3 employment centers will not total the number of employees in a jurisdiction.

Because the data shared here are analyzed specifically for the purposes of these analyses, it is important to note that these results may differ from other sources. Additional information regarding the data sources and important factors to consider when interpreting this information are provided at the end of this packet (Appendix A).

Highlight 1

Industries in this jurisdiction and the region overall

	City of Encinitas		Region	
	Number of jobs	Percentage/rank	Number of jobs	Percentage/rank
Health care and social assistance	3,850	14% (3)	199,700	13% (1)
Retail trade	4,483	16% (2)	156,612	10% (2)
Professional, scientific, technical	2,890	10% (4)	148,766	10% (3)
Food services	4,902	17% (1)	131,594	9% (4)
Manufacturing	293	1% (15)	109,234	7% (5)
Administrative, support, waste services	2,242	8% (6)	91,519	6% (6)
Construction	702	3% (8)	83,498	5% (7)
Local government education	1,942	7% (7)	80,300	5% (8)
Other services	2,838	10% (5)	69,124	5% (9)
Finance and insurance	628	2% (11)	47,848	3% (10)
Wholesale trade	661	2% (10)	46,625	3% (11)
Arts, entertainment, recreation	576	2% (12)	45,639	3% (12)
Real estate, rental, leasing	671	2% (9)	38,582	3% (13)
Local government	310	1% (14)	37,429	2% (14)
Transportation and warehousing	280	1% (16)	36,183	2% (15)
Accommodation	135	1% (19)	33,094	2% (16)
Educational services	456	2% (13)	32,892	2% (17)
State government education	0	0% (22)	31,600	2% (18)
Information	192	1% (18)	26,262	2% (19)
Department of Defense	0	0% (23)	22,500	1% (20)
Management of companies/enterprises	99	<1% (20)	21,500	1% (21)
Federal government	0	0% (24)	11,454	1% (22)
Farm	245	1% (17)	9,000	1% (23)
Utilities	55	<1% (21)	7,208	<1% (24)
State government	0	0% (25)	7,037	<1% (25)
Mining and logging	0	0% (26)	300	<1% (26)
Total	28,450		1,525,500	

Source: SANDAG Employment Estimates, 2016

Highlight 2

Other statistics about the education level and income of employees in this jurisdiction

24%

have Bachelor's degree or higher (24% region)

\$42,937

mean employee salary (\$55,801 region)

these jobs represent

1.9%

of the region's jobs

these incomes represent






1.3%

of regional labor income

Sources: SANDAG Employment Estimates, 2016; LEHD LODES OD, 7.3, 2015

Highlight 3

What mode of transportation employees in this jurisdiction use to get to work during peak period

	Drive alone 	Transit 	Carpool 	Bike 	Walk 
City of Encinitas	84%	2%	12%	2%	<1%
Region	80%	4%	13%	2%	1%

Source: SANDAG Activity Based Model, 2016

Highlight 4

How far employees drive on average to get to this jurisdiction during peak period and how long it takes them on average, by transportation mode

	City of Encinitas		Region	
	Mean number of miles	Mean length of time (Minutes)	Mean number of miles	Mean length of time (Minutes)
Vehicles	13.1	27.2	12.0	25.1
Transit	14.8	91.0	10.7	62.8
Bike	3.5	17.7	4.3	21.6
Walk	1.4	27.8	1.2	23.2

Note: Peak period includes 6:00 a.m. to 8:59 a.m. and 3:30 p.m. to 6:59 p.m.

Source: SANDAG Activity Based Model, 2016

Highlight 5

Where employees travel from to work in the City of Encinitas

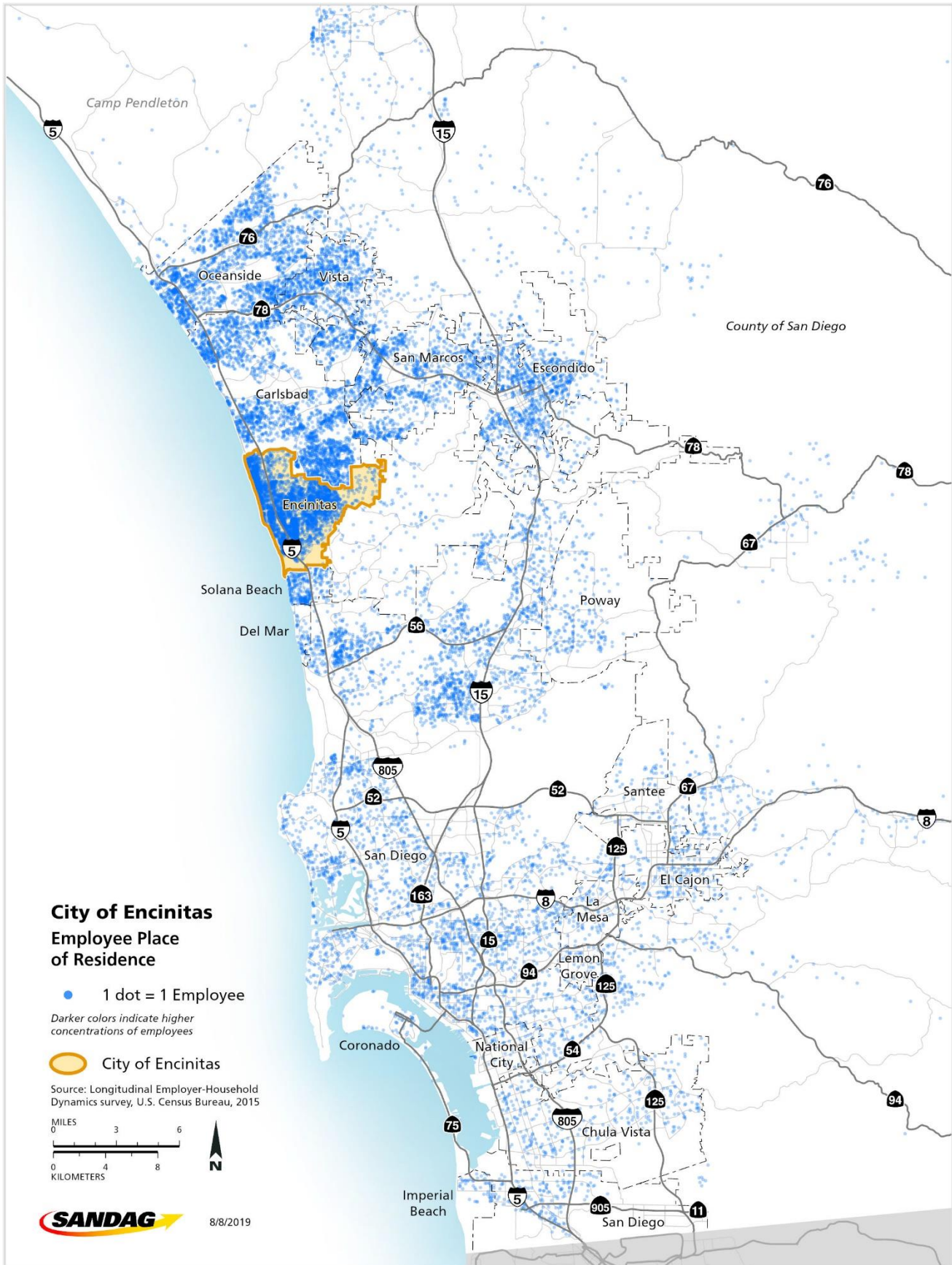
Jurisdiction	Number of workers who travel from jurisdiction to the City of Encinitas	Percent
San Diego	3,911	21%
Encinitas	3,740	20%
Carlsbad	2,391	13%
Oceanside	2,082	11%
Unincorporated	1,622	9%
Vista	1,095	6%
San Marcos	1,049	6%
Escondido	968	5%
Chula Vista	303	2%
Solana Beach	300	2%
Poway	221	1%
El Cajon	159	1%
La Mesa	88	1%
Santee	86	1%
National City	76	<1%
Coronado	57	<1%
Del Mar	54	<1%
Imperial Beach	48	<1%
Lemon Grove	39	<1%
Total	18,289	

Note: The total number of employees shown here is lower than presented elsewhere because employees who travel from outside the region or have an unknown origin location are excluded and only primary jobs are included.

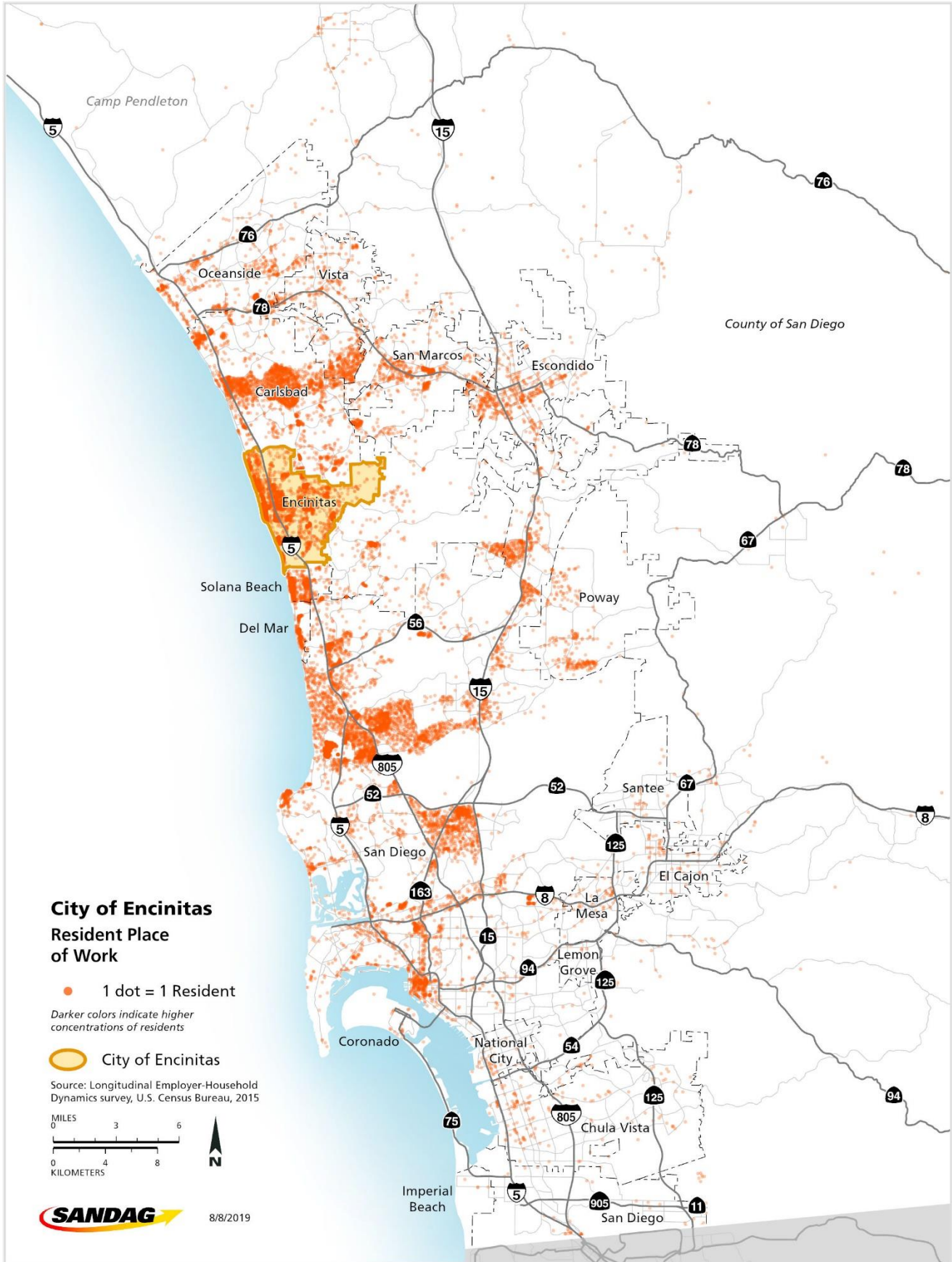
Source: SANDAG Employment Estimates, 2016; LEHD LODES OD, 7.3, 2015

Map 1

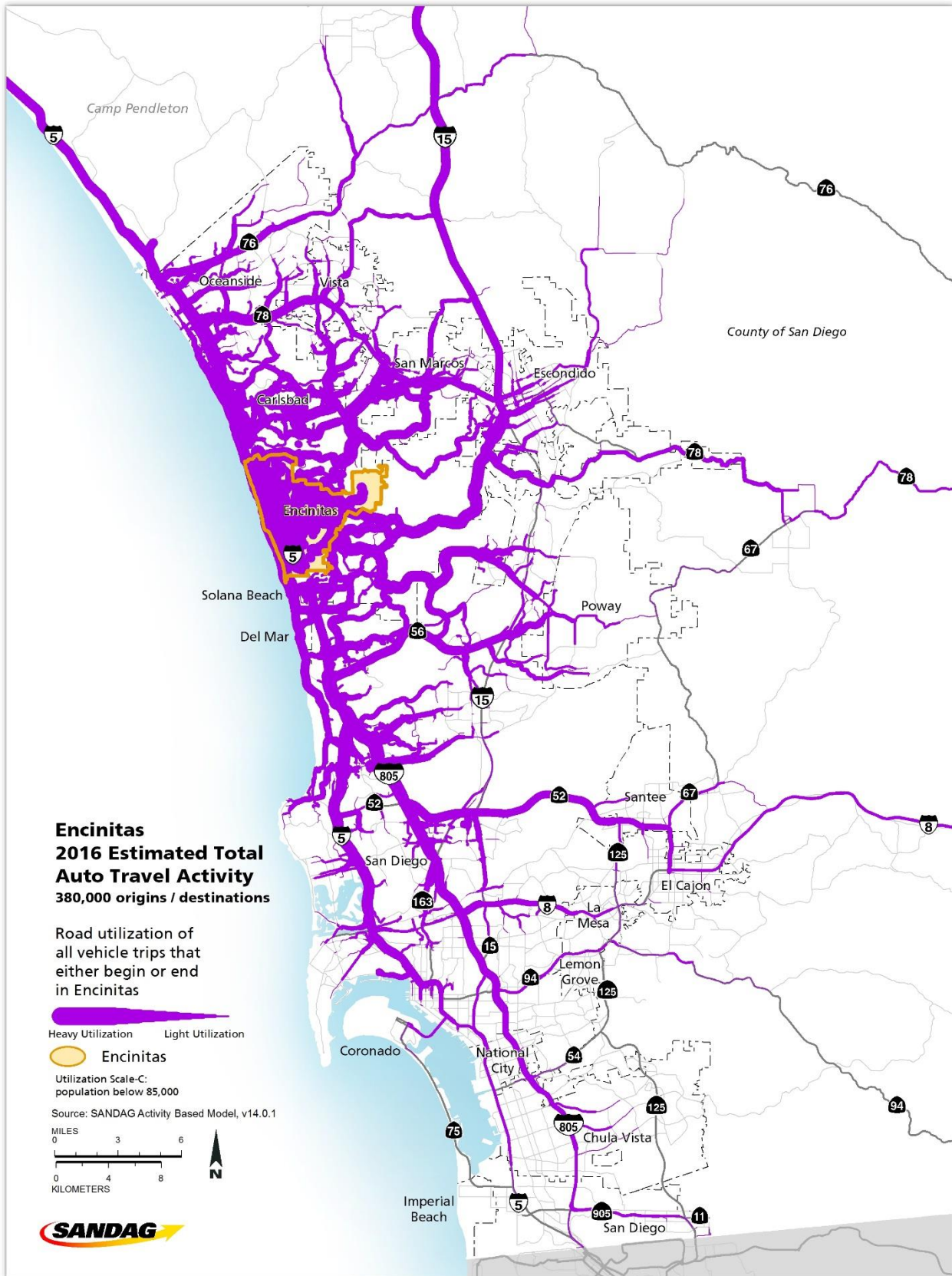
Where do employees in the City of Encinitas live?



Where do residents of Encinitas work?



All automobile trips that originate or end in the City of Encinitas for work, recreation, or any other reason



Page intentionally left blank.

Appendix A: Jurisdiction employment methodology, data sources, and other things to consider

Methodology

As a supplement to the employment center products and presentations, SANDAG has prepared this packet to showcase jurisdiction employment data. This packet was created using the same source data and methodology as the employment center products. Employment centers represent areas of employment concentration, whereas this packet refers to the jurisdictional employment in whole.

Additional technical information regarding this methodology is available by contacting the Data, Analytics, and Modeling Department at SANDAG.

Data sources and other things to consider

Longitudinal Employer-Household Dynamics (LEHD) Origin-Destination Employment Statistics (LODES) 7.3 (2015)

The Longitudinal Employer-Household Dynamics (LEHD) Origin-Destination Employment Statistics (LODES) data are a publicly available product of the U.S. Census Bureau. The LODES data are an extract of the LEHD infrastructure which is composed of administrative records, census, and survey data. The LODES data provide counts of unemployment insurance-covered wage and salary jobs, including private sector and state, local and some federal government jobs. Workplace location and residential location of an employee is measured at the census block-level (2010). The 2015 data that are used here reflect the latest available data (version 7.3) at the time of this analysis and included two primary tables: Original-Destinations (OD) (used in Highlight 5 and Maps 1 and 2), and Workplace Area Characteristics (WAC) (Highlight 2). It should be noted these data (1) contain wage and salary jobs (and exclude self-employed individuals); (2) do not include military and other security-related federal agencies, postal workers, some employees at nonprofits and religious institutions, and informal workers; (3) only includes an individual's primary job if an individual has more than one; and (4) education attainment includes only workers age 30 or older. Additional information is available at <https://lehd.ces.census.gov/data/>.

SANDAG Employment Estimates (2016)

On a regular basis, SANDAG produces estimates of employment and individual earnings for the San Diego region. These estimates were used in Fast facts and Highlights 1, 2, and 5. These estimates utilize California Employment Development Department (EDD) data, the Quarterly Census of Employment and Wages (QCEW) data, and the LEHD LODES data from the U.S. Census Bureau among other sources. The employment estimates include wage and salary for private sector and government workers, as well as the self-employed. Uniformed military are not included; however, U.S. Department of Defense (DOD) civilian workers have been assigned to military bases. Tribal government jobs are included where data were available. Additional information regarding these estimates is available by contacting the Economic and Demographic Analysis Modeling team at SANDAG.

SANDAG Population and Housing Estimates (2016)

Each year SANDAG produces estimates of population and housing for the San Diego region. These estimates utilize several data sources including the California Department of Finance, the U.S. Census Bureau, and a variety of other publicly available datasets. These small-area estimates contain information on the characteristics of the population (ethnicity, age, sex) and housing units (occupied, vacant, unoccupiable) in the region. The population living in military barracks, college dorms and other institutional facilities are included in the population and are counted in housing referred to as Group Quarters. The active military population and their dependents who live in households are included in the household population counts. The population and housing estimates are created in a process similar to the Regional Growth Forecast and contain similar information, however the Population and Housing Estimates reflect current conditions. These data are in Appendix B. Additional information regarding these estimates is available by contacting the Economic and Demographic Analysis Modeling team at SANDAG.

SANDAG Activity Based Transportation Model (2016)

To plan and complete regional transportation projects, SANDAG creates and maintains a transportation model which uses a variety of regional transportation survey and socioeconomic and demographic data (e.g., count of trips from home to work, how people carpool, what bus routes are most frequented, and which highways are used and when). These data are then utilized in the Activity Based Model (ABM) to simulate individual and household transportation choices. These choices include how individuals travel around the region (the mode), why people travel around the region (the trip purpose), and when they travel (time of day). The ABM model is refined based on transportation data and expert feedback on methodology and data sources. For this analysis, SANDAG utilized release version 14.0.1 of ABM to estimate travel for the year 2016 (reference scenario #232). Data in both Highlight 3 and 4 are restricted only to transportation trips in the model in which (1) the trip begins at home and ends at work and does not have any intermediary stops (e.g., dropping a child at school); and (2) the trip's purpose is work and (3) the trip start time is during peak periods which are defined as 6:00 a.m. to 8:59 a.m. and 3:30 p.m. to 6:59 p.m. Transit travel time includes walk time to transit stop, initial wait time, in vehicle time, transfer wait time, and walk time to the destination. Map 3 includes all auto trips (work and non-work related) to and from Encinitas. The margin of error might be larger for small jurisdictions with few work trips and all trips. Additional information about the ABM is available here:

sandag.org/index.asp?subclassid=120&fuseaction=home.subclasshome

Appendix B: Jurisdiction resident profile

Demographic and Socioeconomic Estimates Jurisdiction Encinitas



	Jan 1, 2018
Total Population	63,158
Household Population	62,630
Group Quarters Population	528
Persons Per Household	2.52

Housing and Occupancy

	Total Housing Units	Households	Vacancy Rate
Total Housing Units	26,136	24,823	5.0%
Single Family - Detached	16,490	15,679	4.9%
Single Family - Attached	4,831	4,580	5.2%
Multi-Family	4,076	3,868	5.1%
Mobile Home and Other	739	696	5.8%

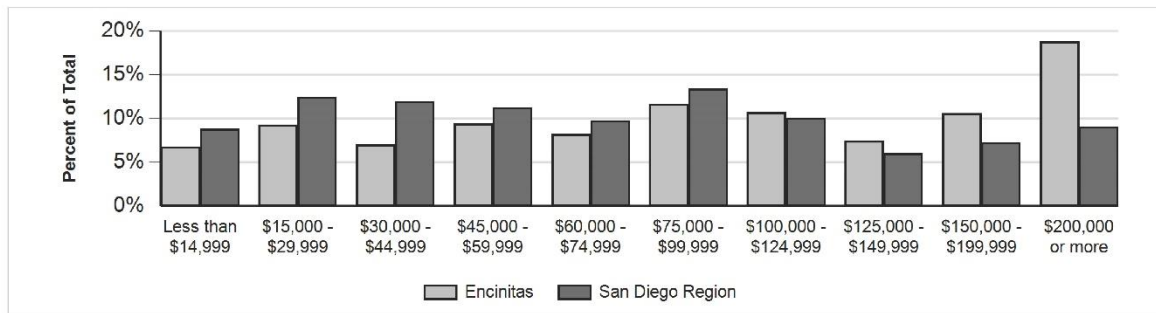
Household Income

Households by Income Category (2010 \$, adjusted for inflation)

	Less than \$15,000	\$15,000-\$29,999	\$30,000-\$44,999	\$45,000-\$59,999	\$60,000-\$74,999	\$75,000-\$99,999	\$100,000-\$124,999	\$125,000-\$149,999	\$150,000-\$199,999	\$200,000 or more
% of Total	7%	9%	7%	9%	8%	12%	11%	7%	11%	19%

Median Household Income

	2018
Adjusted for Inflation (2010 \$)	\$94,853
Not adjusted for inflation (current 2017\$)	\$106,960



IMPORTANT ADVISORY:

Caution should be taken when using data for small population groups, particularly at small levels of geography. Minor adjustments were made (such as correcting the location of housing units that were erroneously allocated by the Census Bureau to roads and open space) to more accurately reflect the region's true population and housing distribution.

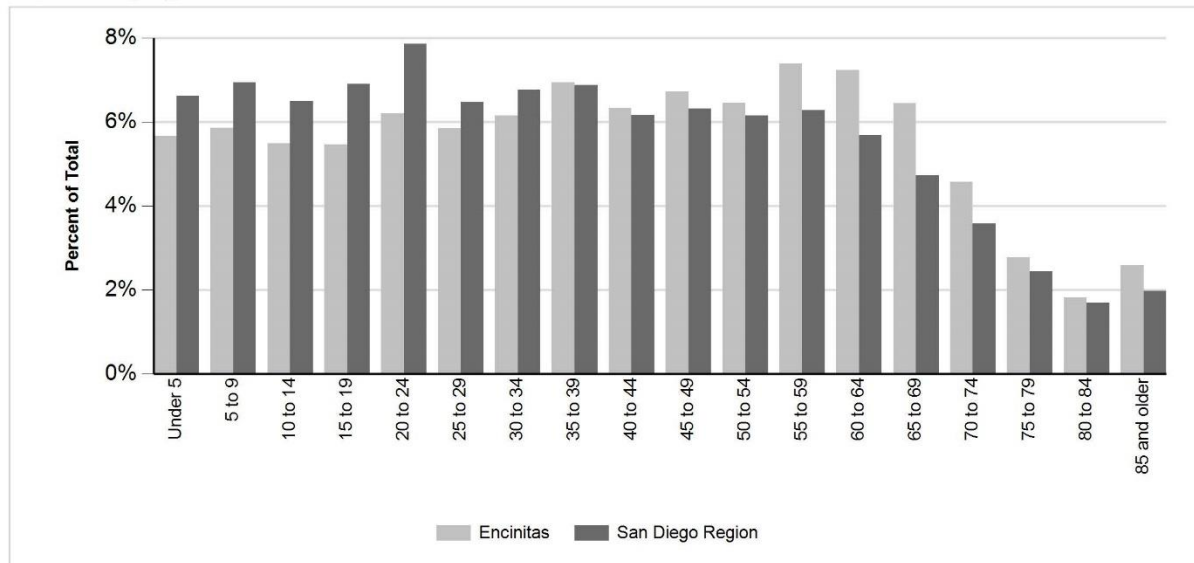
In addition, Census 2010 does not include information about structure type or household income. Those details and other demographic estimates shown here are developed from other sources, including the California Department of Finance E-5 estimates for cities and the County of San Diego; San Diego County Assessor Records, vital events records from the California Department of Health, and income data from the U.S. Census Bureau American Community Survey.

Caution should always be taken when using data for small population groups, particularly at small levels of geography.

Population by Age and Sex

	Total	Male	Female	Percent Female
Total Population	63,158	31,351	31,807	50%
Under 5	3,578	1,869	1,709	48%
5 to 9	3,705	1,905	1,800	49%
10 to 14	3,467	1,741	1,726	50%
15 to 17	2,246	1,208	1,038	46%
18 and 19	1,209	602	607	50%
20 to 24	3,922	2,020	1,902	48%
25 to 29	3,691	1,908	1,783	48%
30 to 34	3,887	2,011	1,876	48%
35 to 39	4,388	2,224	2,164	49%
40 to 44	4,000	2,044	1,956	49%
45 to 49	4,251	2,156	2,095	49%
50 to 54	4,079	1,978	2,101	52%
55 to 59	4,668	2,266	2,402	51%
60 and 61	1,832	905	927	51%
62 to 64	2,738	1,307	1,431	52%
65 to 69	4,075	1,969	2,106	52%
70 to 74	2,889	1,403	1,486	51%
75 to 79	1,752	789	963	55%
80 to 84	1,149	483	666	58%
85 and older	1,632	563	1,069	66%
Under 18	12,996	6,723	6,273	48%
65 and older	11,497	5,207	6,290	55%
Median Age	41.9	40.5	43.3	N/A

Population by Age



Source: SANDAG, Current Estimates
 SANDAG
www.sandag.org

May 25, 2019
 Encinitas
 Page 2 of 3

Population by Race, Ethnicity and Age

	Non-Hispanic					
	Hispanic	White	Black	American Indian	Asian & Pacific Isl.	All Other
Total Population	9,889	47,525	495	268	3,163	1,818
Under 5	889	2,354	21	8	128	178
5 to 9	965	2,335	45	8	136	216
10 to 14	807	2,276	60	17	129	178
15 to 17	535	1,440	26	13	91	141
18 and 19	281	766	34	6	51	71
20 to 24	785	2,705	47	17	172	196
25 to 29	620	2,742	29	16	144	140
30 to 34	571	2,958	36	19	197	106
35 to 39	701	3,295	18	17	243	114
40 to 44	691	2,890	25	20	286	88
45 to 49	690	3,085	26	30	330	90
50 to 54	590	3,105	33	20	261	70
55 to 59	535	3,765	22	21	243	82
60 and 61	149	1,550	10	9	89	25
62 to 64	257	2,289	11	15	134	32
65 to 69	298	3,507	23	16	193	38
70 to 74	203	2,520	11	6	122	27
75 to 79	133	1,492	6	5	103	13
80 to 84	87	986	5	4	61	6
85 and older	102	1,465	7	1	50	7
Under 18	3,196	8,405	152	46	484	713
65 and older	823	9,970	52	32	529	91
Median Age	30.5	45.0	27.5	43.3	45.1	23.2

Page intentionally left blank.

Appendix C: Employment centers located within the City of Encinitas



Encinitas Beach employment center Tier 4 employment centers in the San Diego region¹: An analysis of where people live and work

Highlight 1

Characteristics of this employment center



Sources: SANDAG Employment Estimates, 2016; LEHD LODES OD, 7.3, 2015

Highlight 2

Industries in this employment center and the region overall

	Encinitas Beach employment center		Region	
	Number of jobs	Percentage/ rank	Number of jobs	Percentage/ rank
Health care and social assistance	507	7% (5)	199,700	13% (1)
Retail trade	994	14% (2)	156,612	10% (2)
Professional, scientific, technical	949	13% (3)	148,766	10% (3)
Food services	2,005	27% (1)	131,594	9% (4)
Manufacturing	117	2% (12)	109,234	7% (5)
Administrative, support, waste services	284	4% (9)	91,519	6% (6)
Construction	407	6% (6)	83,498	5% (7)
Local government education	61	1% (18)	80,300	5% (8)
Other services	614	8% (4)	69,124	5% (9)
Finance and insurance	96	1% (13)	47,848	3% (10)
Wholesale trade	341	5% (7)	46,625	3% (11)
Arts, entertainment, recreation	134	2% (11)	45,639	3% (12)
Real estate, rental, leasing	214	3% (10)	38,582	3% (13)
Local government	310	4% (8)	37,429	2% (14)
Transportation and warehousing	90	1% (14)	36,183	2% (15)
Accommodation	83	1% (15)	33,094	2% (16)
Educational services	63	1% (17)	32,892	2% (17)
State government education	0	0% (21)	31,600	2% (18)
Information	66	1% (16)	26,262	2% (19)
Department of Defense	0	0% (22)	22,500	1% (20)
Management of companies/enterprises	11	<1% (20)	21,500	1% (21)
Federal government	0	0% (23)	11,454	1% (22)
Farm	0	0% (24)	9,000	1% (23)
Utilities	23	<1% (19)	7,208	<1% (24)
State government	0	0% (25)	7,037	<1% (25)
Mining and logging	0	0% (26)	300	<1% (26)
Total	7,369		1,525,500	

Source: SANDAG Employment Estimates, 2016

¹ This data summary was prepared by SANDAG and is part of an evolving analysis of where people live and work in the San Diego region. Tier 4 employment centers are those between 2,000 and 14,999 employees. For data notes, sources, and qualifications, please visit: sandag.org/employmentcenters. Suggested reference: SANDAG (2019, May). *Tier 4 employment centers in the San Diego region: Encinitas Beach employment center*. San Diego, CA: Author.

Highlight 3

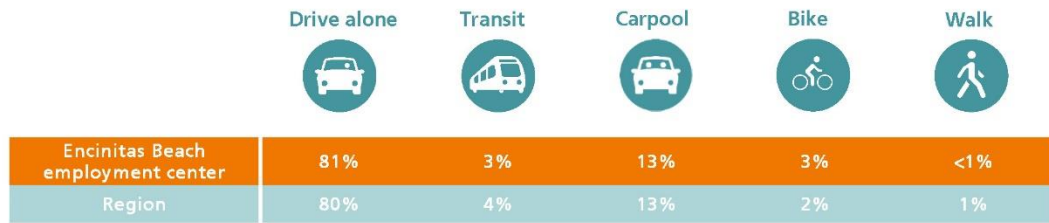
Other statistics about the education level and income of employees in this employment center



Sources: SANDAG Employment Estimates, 2016; LEHD LODES OD, 7.3, 2015

Highlight 4

What mode of transportation these employment center employees use to get to work during peak period?



Source: SANDAG Activity Based Model, 2016

Highlight 5

How far employees drive on average to get to this employment center during peak period and how long it takes them on average, by transportation mode

	Encinitas Beach employment center		Region	
	Mean number of miles	Mean length of time (Minutes)	Mean number of miles	Mean length of time (Minutes)
Vehicles	13.3	27.0	12.0	25.1
Transit	15.6	90.7	10.7	62.8
Bike	3.4	16.9	4.3	21.6
Walk	1.4	27.8	1.2	23.2

Note: Peak period includes 6:00 a.m. to 8:59 a.m. and 3:30 p.m. to 6:59 p.m.

Source: SANDAG Activity Based Model, 2016

Highlight 6

What jurisdictions these employment center employees travel from

Jurisdiction	Number of workers in the employment center	Percent
Encinitas	1,224	22%
San Diego	1,139	21%
Carlsbad	833	15%
Oceanside	578	10%
Unincorporated	469	8%
Vista	350	6%
San Marcos	302	5%
Escondido	240	4%
Chula Vista	113	2%
Solana Beach	102	2%
Poway	58	1%
El Cajon	30	1%
National City	28	1%
La Mesa	22	<1%
Coronado	20	<1%
Imperial Beach	17	<1%
Del Mar	16	<1%
Santee	14	<1%
Lemon Grove	11	<1%
Total	5,566	

Note: The total number of employees shown here is lower than presented elsewhere because employees who travel from outside the region or have an unknown origin location are excluded and only primary jobs are included.

Source: SANDAG Employment Estimates, 2016; LEHD LODES OD, 7.3, 2015

Map 1

Encinitas Beach employment center



Encinitas–La Costa employment center

Tier 4 employment centers in the San Diego region¹: An analysis of where people live and work

Highlight 1

Characteristics of this employment center

6,524 employees	57th largest employment center of the 79	.63 square miles	10,356 employees per square mile	.4% of employees in this employment center also live in this employment center
---------------------------	--	----------------------------	---	--

Sources: SANDAG Employment Estimates, 2016; LEHD LODES OD, 7.3, 2015

Highlight 2

Industries in this employment center and the region overall

	Encinitas–La Costa employment center		Region	
	Number of jobs	Percentage/ rank	Number of jobs	Percentage/ rank
Health care and social assistance	888	14% (3)	199,700	13% (1)
Retail trade	2,475	38% (1)	156,612	10% (2)
Professional, scientific, technical	322	5% (5)	148,766	10% (3)
Food services	1,384	21% (2)	131,594	9% (4)
Manufacturing	41	1% (14)	109,234	7% (5)
Administrative, support, waste services	193	3% (7)	91,519	6% (6)
Construction	75	1% (10)	83,498	5% (7)
Local government education	0	0% (18)	80,300	5% (8)
Other services	487	8% (4)	69,124	5% (9)
Finance and insurance	287	4% (6)	47,848	3% (10)
Wholesale trade	35	1% (15)	46,625	3% (11)
Arts, entertainment, recreation	82	1% (8)	45,639	3% (12)
Real estate, rental, leasing	60	1% (11)	38,582	3% (13)
Local government	0	0% (19)	37,429	2% (14)
Transportation and warehousing	80	1% (9)	36,183	2% (15)
Accommodation	0	0% (20)	33,094	2% (16)
Educational services	49	1% (12)	32,892	2% (17)
State government education	0	0% (21)	31,600	2% (18)
Information	43	1% (13)	26,262	2% (19)
Department of Defense	0	0% (22)	22,500	1% (20)
Management of companies/enterprises	19	<1% (16)	21,500	1% (21)
Federal government	0	0% (23)	11,454	1% (22)
Farm	0	0% (24)	9,000	1% (23)
Utilities	4	<1% (17)	7,208	<1% (24)
State government	0	0% (25)	7,037	<1% (25)
Mining and logging	0	0% (26)	300	<1% (26)
Total	6,524		1,525,500	

Source: SANDAG Employment Estimates, 2016

¹ This data summary was prepared by SANDAG and is part of an evolving analysis of where people live and work in the San Diego region. Tier 4 employment centers are those between 2,000 and 14,999 employees. For data notes, sources, and qualifications, please visit: sandag.org/employmentcenters. Suggested reference: SANDAG (2019, May). *Tier 4 employment centers in the San Diego region: Encinitas–La Costa employment center*. San Diego, CA: Author.

Highlight 3

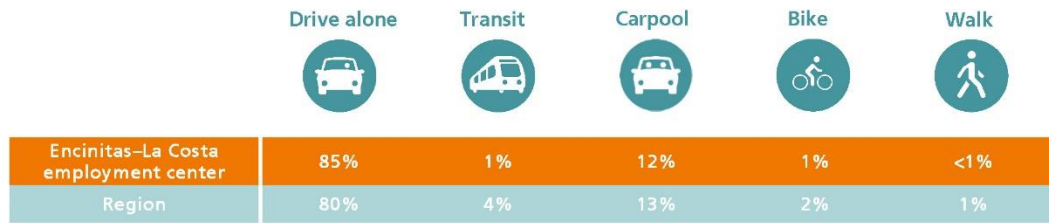
Other statistics about the education level and income of employees in this employment center



Sources: SANDAG Employment Estimates, 2016; LEHD LODES OD, 7.3, 2015

Highlight 4

What mode of transportation these employment center employees use to get to work during peak period?



Source: SANDAG Activity Based Model, 2016

Highlight 5

How far employees drive on average to get to this employment center during peak period and how long it takes them on average, by transportation mode

	Encinitas-La Costa employment center		Region	
	Mean number of miles	Mean length of time (Minutes)	Mean number of miles	Mean length of time (Minutes)
Vehicles	12.0	26.5	12.0	25.1
Transit	11.7	84.2	10.7	62.8
Bike	4.9	24.3	4.3	21.6
Walk	1.2	23.9	1.2	23.2

Note: Peak period includes 6:00 a.m. to 8:59 a.m. and 3:30 p.m. to 6:59 p.m.

Source: SANDAG Activity Based Model, 2016

Highlight 6

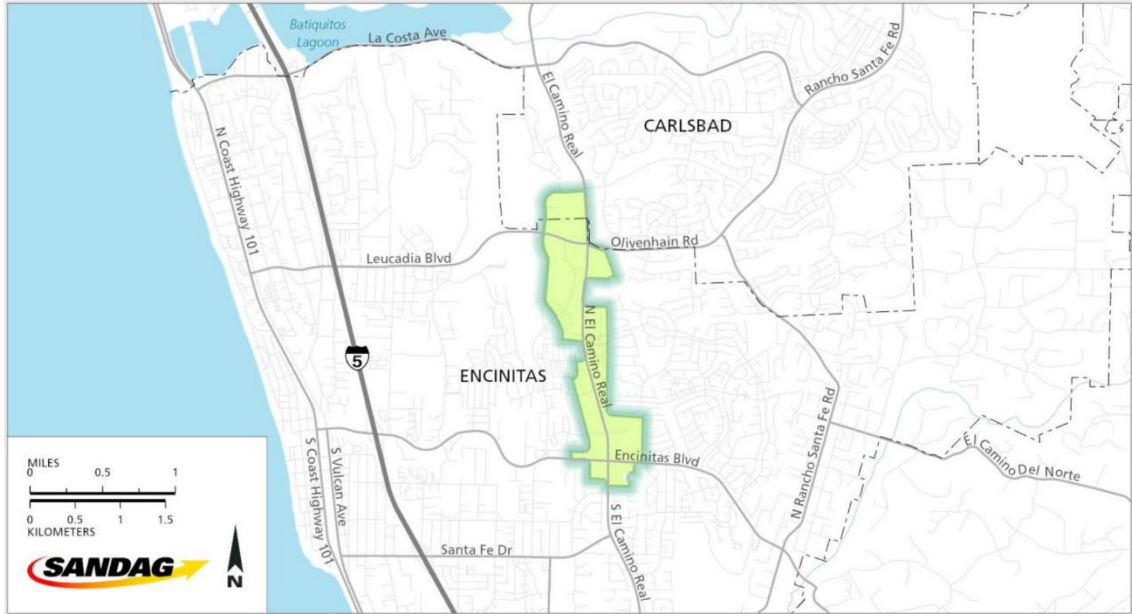
What jurisdictions these employment center employees travel from

Jurisdiction	Number of workers in the employment center	Percent
San Diego	665	23%
Encinitas	442	16%
Carlsbad	367	13%
Oceanside	346	12%
Unincorporated	268	10%
San Marcos	190	7%
Escondido	190	7%
Vista	168	6%
Poway	44	2%
Chula Vista	42	2%
Solana Beach	37	1%
El Cajon	20	1%
La Mesa	18	1%
Coronado	11	<1%
Santee	11	<1%
National City	9	<1%
Lemon Grove	5	<1%
Imperial Beach	4	<1%
Del Mar	4	<1%
Total	2,831	

Note: The total number of employees shown here is lower than presented elsewhere because employees who travel from outside the region or have an unknown origin location are excluded and only primary jobs are included.

Source: SANDAG Employment Estimates, 2016; LEHD LODES OD, 7.3, 2015

Map 1
Encinitas–La Costa employment center



Encinitas 1-5 Eastward employment center

Tier 4 employment centers in the San Diego region¹: An analysis of where people live and work

Highlight 1

Characteristics of this employment center

5,857 employees	60th largest employment center of the 79	1.74 square miles	3,366 employees per square mile	3.0% of employees in this employment center also live in this employment center
---------------------------	--	-----------------------------	--	---

Sources: SANDAG Employment Estimates, 2016; LEHD LODES OD, 7.3, 2015

Highlight 2

Industries in this employment center and the region overall

	Encinitas 1-5 Eastward employment center		Region	
	Number of jobs	Percentage/ rank	Number of jobs	Percentage/ rank
Health care and social assistance	1,149	20% (2)	199,700	13% (1)
Retail trade	571	10% (3)	156,612	10% (2)
Professional, scientific, technical	446	8% (6)	148,766	10% (3)
Food services	404	7% (7)	131,594	9% (4)
Manufacturing	130	2% (9)	109,234	7% (5)
Administrative, support, waste services	542	9% (4)	91,519	6% (6)
Construction	42	1% (16)	83,498	5% (7)
Local government education	535	9% (5)	80,300	5% (8)
Other services	1,338	23% (1)	69,124	5% (9)
Finance and insurance	114	2% (10)	47,848	3% (10)
Wholesale trade	145	3% (8)	46,625	3% (11)
Arts, entertainment, recreation	27	1% (18)	45,639	3% (12)
Real estate, rental, leasing	102	2% (11)	38,582	3% (13)
Local government	0	0% (20)	37,429	2% (14)
Transportation and warehousing	62	1% (14)	36,183	2% (15)
Accommodation	25	<1% (19)	33,094	2% (16)
Educational services	74	1% (12)	32,892	2% (17)
State government education	0	0% (21)	31,600	2% (18)
Information	34	1% (17)	26,262	2% (19)
Department of Defense	0	0% (22)	22,500	1% (20)
Management of companies/enterprises	47	1% (15)	21,500	1% (21)
Federal government	0	0% (23)	11,454	1% (22)
Farm	70	1% (13)	9,000	1% (23)
Utilities	0	0% (24)	7,208	<1% (24)
State government	0	0% (25)	7,037	<1% (25)
Mining and logging	0	0% (26)	300	<1% (26)
Total	5,857		1,525,500	

Source: SANDAG Employment Estimates, 2016

¹ This data summary was prepared by SANDAG and is part of an evolving analysis of where people live and work in the San Diego region. Tier 4 employment centers are those between 2,000 and 14,999 employees. For data notes, sources, and qualifications, please visit: sandag.org/employmentcenters. Suggested reference: SANDAG (2019, May). *Tier 4 employment centers in the San Diego region: Encinitas 1-5 Eastward employment center*. San Diego, CA: Author.

Highlight 3

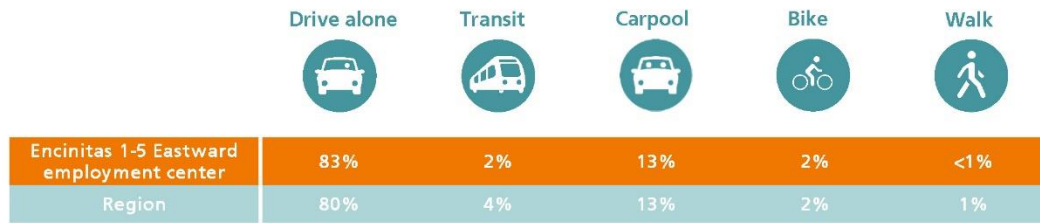
Other statistics about the education level and income of employees in this employment center



Sources: SANDAG Employment Estimates, 2016; LEHD LODES OD, 7.3, 2015

Highlight 4

What mode of transportation these employment center employees use to get to work during peak period?



Source: SANDAG Activity Based Model, 2016

Highlight 5

How far employees drive on average to get to this employment center during peak period and how long it takes them on average, by transportation mode

	Encinitas 1-5 Eastward employment center		Region	
	Mean number of miles	Mean length of time (Minutes)	Mean number of miles	Mean length of time (Minutes)
Vehicles	13.2	26.4	12.0	25.1
Transit	16.7	88.5	10.7	62.8
Bike	2.7	13.4	4.3	21.6
Walk	1.6	31.9	1.2	23.2

Note: Peak period includes 6:00 a.m. to 8:59 a.m. and 3:30 p.m. to 6:59 p.m.

Source: SANDAG Activity Based Model, 2016

Highlight 6

What jurisdictions these employment center employees travel from

Jurisdiction	Number of workers in the employment center	Percent
San Diego	731	22%
Encinitas	631	19%
Carlsbad	430	13%
Oceanside	391	12%
Unincorporated	291	9%
San Marcos	187	6%
Vista	184	6%
Escondido	157	5%
Chula Vista	61	2%
Solana Beach	49	2%
El Cajon	41	1%
Poway	39	1%
La Mesa	23	1%
Santee	22	1%
National City	11	<1%
Coronado	10	<1%
Del Mar	9	<1%
Lemon Grove	9	<1%
Imperial Beach	7	<1%
Total	3,283	

Note: The total number of employees shown here is lower than presented elsewhere because employees who travel from outside the region or have an unknown origin location are excluded and only primary jobs are included.

Source: SANDAG Employment Estimates, 2016; LEHD LODES OD, 7.3, 2015

Map 1

Encinitas 1-5 Eastward employment center

