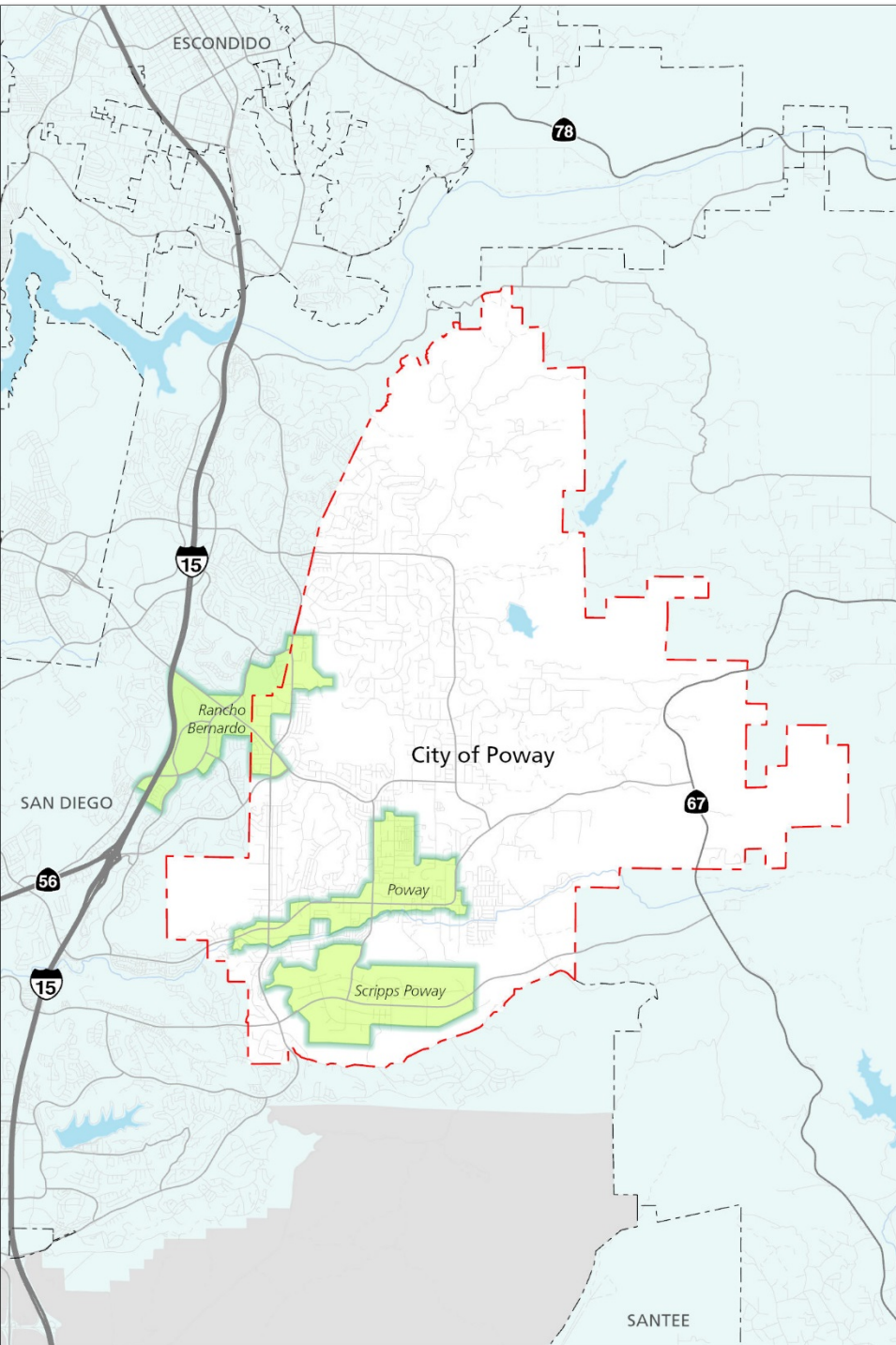


Employment in the San Diego region

City of Poway



Fast facts

City of Poway

35,047	employees
2.3%	region's employees
39.1	land area (square miles)
895.9	employees per square mile

Key contact

Ray Major
Chief Economist
(619) 595-5668
ray.major@sandag.org

August 2019

Table of Contents

The statistics	3
The maps	5
Appendix A: Jurisdiction employment methodology, data sources, and other things to consider	9
Appendix B: Jurisdiction resident profile	11
Appendix C: Employment centers located within the City of Poway	15

Background

The San Diego region is a growing and dynamic place to live and work. As the community, policy makers, and other stakeholders collaborate regarding how we create transportation options for our residents that are competitive and environmentally responsible, it is essential we utilize the data we have regarding where people live and work to invest in strategies that will best serve our communities.

In spring 2019, the Data, Analytics, and Modeling Department of SANDAG applied data analytics to multiple data sources to better understand where employment centers are in the region, where the employees in these areas commute from, and what their commutes look like. The result of this analysis were packets describing over 70 employment centers across the San Diego region.

As a next step in this series, this packet describes employment in the **City of Poway**, including maps showing where individuals who work in the City of Poway live and how far they have to travel to get to their places of employment, where residents of Poway travel to work, as well as a map that shows all of the travel to and from the City of Poway regardless if for work, recreation, or any other reason. SANDAG 2018 demographic and socioeconomic estimates for the population of Poway are included (Appendix B), as are the 3 packets for employment centers located all or partially in the City of Poway (as shown in the red outline on the cover of this packet and Appendix C). Because employment centers can cross jurisdictional boundaries and not all the employees in a jurisdiction are included in an employment center, it is important to note the number of employees in these 3 employment centers will not total the number of employees in a jurisdiction.

Because the data shared here are analyzed specifically for the purposes of these analyses, it is important to note that these results may differ from other sources. Additional information regarding the data sources and important factors to consider when interpreting this information are provided at the end of this packet (Appendix A).

Highlight 1

Industries in this jurisdiction and the region overall

	City of Poway		Region	
	Number of jobs	Percentage/rank	Number of jobs	Percentage/rank
Health care and social assistance	5,337	15% (2)	199,700	13% (1)
Retail trade	3,661	10% (3)	156,612	10% (2)
Professional, scientific, technical	2,845	8% (6)	148,766	10% (3)
Food services	1,327	4% (9)	131,594	9% (4)
Manufacturing	8,386	24% (1)	109,234	7% (5)
Administrative, support, waste services	1,523	4% (8)	91,519	6% (6)
Construction	2,950	8% (5)	83,498	5% (7)
Local government education	6	<1% (21)	80,300	5% (8)
Other services	1,135	3% (10)	69,124	5% (9)
Finance and insurance	3,195	9% (4)	47,848	3% (10)
Wholesale trade	1,646	5% (7)	46,625	3% (11)
Arts, entertainment, recreation	560	2% (12)	45,639	3% (12)
Real estate, rental, leasing	465	1% (14)	38,582	3% (13)
Local government	316	1% (16)	37,429	2% (14)
Transportation and warehousing	472	1% (13)	36,183	2% (15)
Accommodation	33	<1% (19)	33,094	2% (16)
Educational services	430	1% (15)	32,892	2% (17)
State government education	0	0% (23)	31,600	2% (18)
Information	572	2% (11)	26,262	2% (19)
Department of Defense	0	0% (24)	22,500	1% (20)
Management of companies/enterprises	120	<1% (17)	21,500	1% (21)
Federal government	12	<1% (20)	11,454	1% (22)
Farm	52	<1% (18)	9,000	1% (23)
Utilities	4	<1% (22)	7,208	<1% (24)
State government	0	0% (25)	7,037	<1% (25)
Mining and logging	0	0% (26)	300	<1% (26)
Total	35,047		1,525,500	

Source: SANDAG Employment Estimates, 2016

Highlight 2






Other statistics about the education level and income of employees in this jurisdiction

<p>27%</p> <p>have Bachelor's degree or higher (24% region)</p>	<p>\$58,911</p> <p>mean employee salary (\$55,801 region)</p>	<p>these jobs represent</p> <p>2.3%</p> <p>of the region's jobs</p>	<p>these incomes represent</p> <p>2.2%</p> <p>of regional labor income</p>
--	--	--	---

Sources: SANDAG Employment Estimates, 2016; LEHD LODES OD, 7.3, 2015

Highlight 3

What mode of transportation employees in this jurisdiction use to get to work during peak period

	Drive alone 	Transit 	Carpool 	Bike 	Walk 
City of Poway	87%	<1%	12%	<1%	<1%
Region	80%	4%	13%	2%	1%

Source: SANDAG Activity Based Model, 2016

Highlight 4

How far employees drive on average to get to this jurisdiction during peak period and how long it takes them on average, by transportation mode

	City of Poway		Region	
	Mean number of miles	Mean length of time (Minutes)	Mean number of miles	Mean length of time (Minutes)
Vehicles	14.5	29.8	12.0	25.1
Transit	9.0	62.8	10.7	62.8
Bike	2.6	13.0	4.3	21.6
Walk	1.3	25.7	1.2	23.2

Note: Peak period includes 6:00 a.m. to 8:59 a.m. and 3:30 p.m. to 6:59 p.m.

Source: SANDAG Activity Based Model, 2016

Highlight 5

Where employees travel from to work in the City of Poway

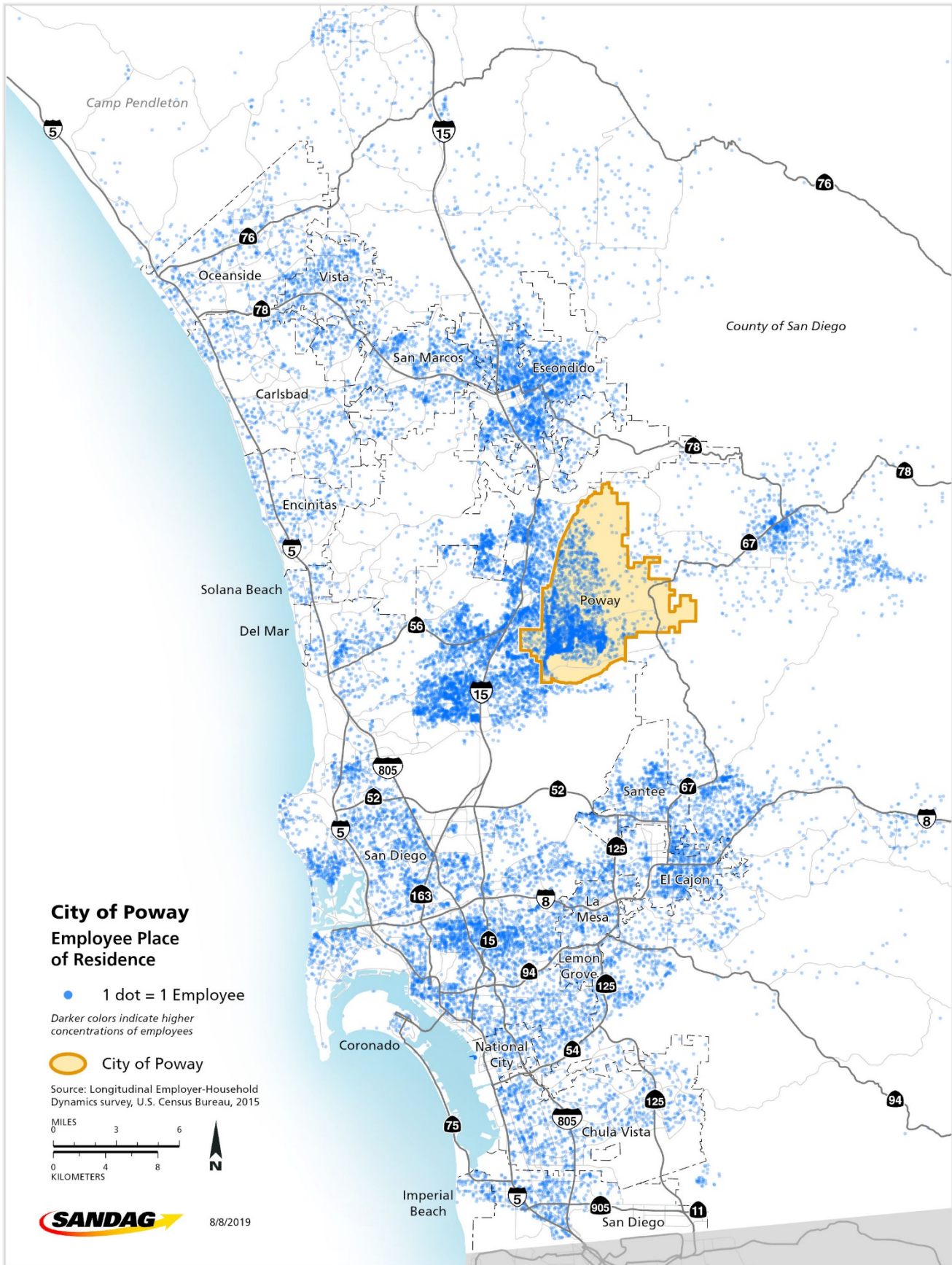
Jurisdiction	Number of workers who travel from jurisdiction to the City of Poway	Percent
San Diego	9,986	41%
Unincorporated	4,206	17%
Poway	2,430	10%
Escondido	2,113	9%
Chula Vista	786	3%
San Marcos	750	3%
El Cajon	687	3%
Santee	617	3%
Oceanside	540	2%
Vista	529	2%
Carlsbad	488	2%
La Mesa	363	2%
Encinitas	261	1%
National City	245	1%
Lemon Grove	135	1%
Imperial Beach	99	<1%
Solana Beach	82	<1%
Coronado	45	<1%
Del Mar	8	<1%
Total	24,370	

Note: The total number of employees shown here is lower than presented elsewhere because employees who travel from outside the region or have an unknown origin location are excluded and only primary jobs are included.

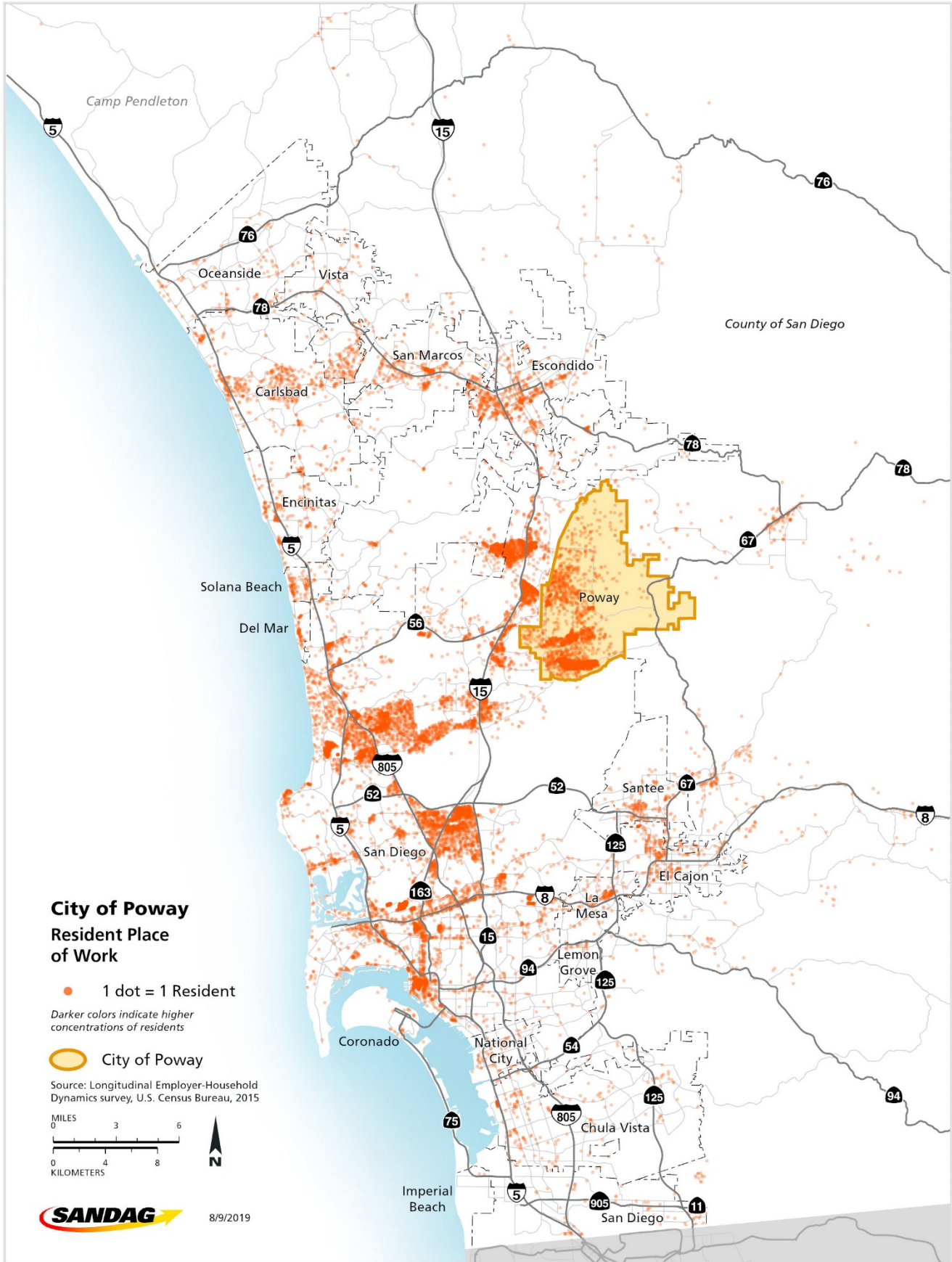
Source: SANDAG Employment Estimates, 2016; LEHD LODES OD, 7.3, 2015

Map 1

Where do employees in the City of Poway live?

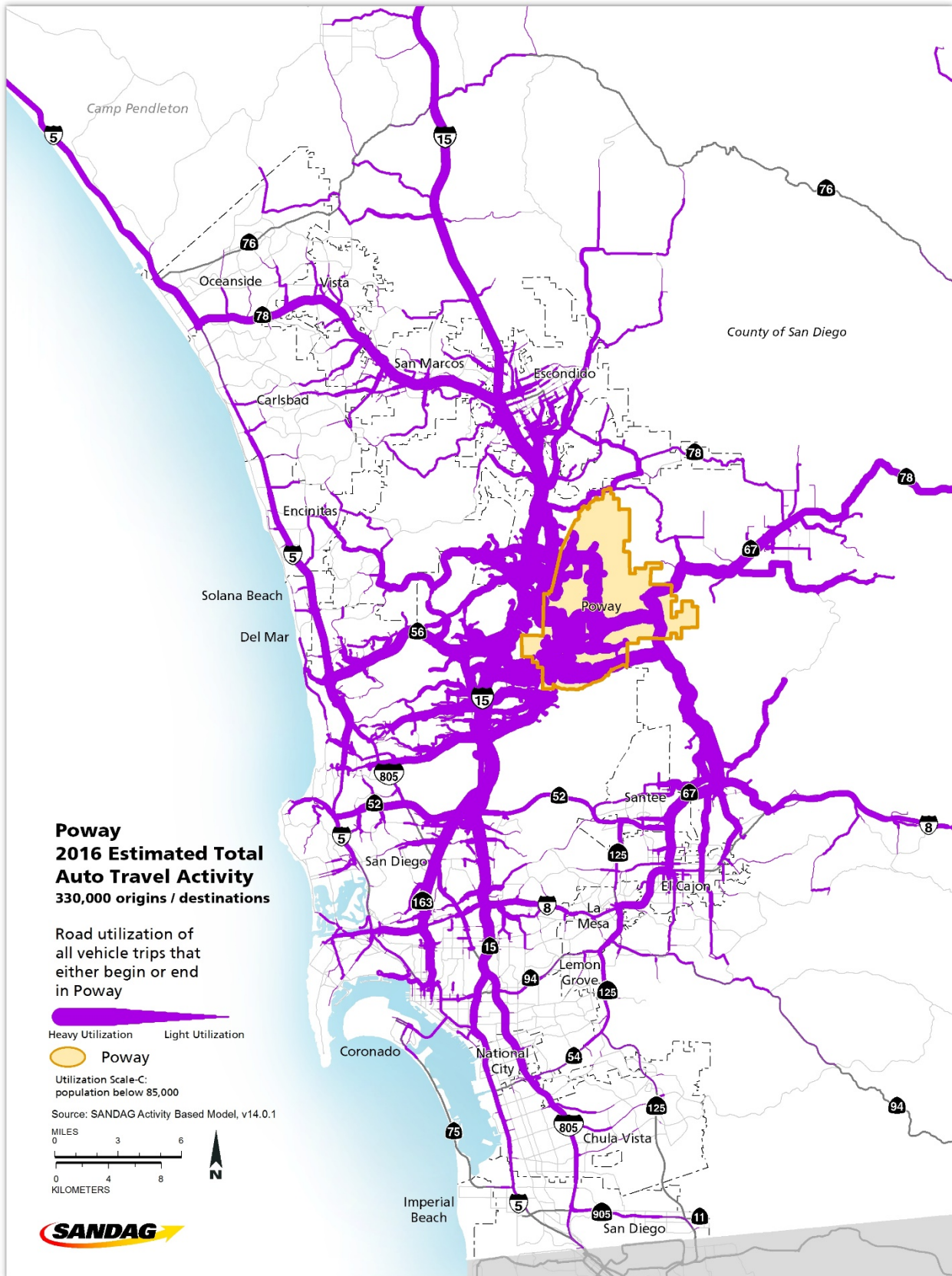


Where do residents of Poway work?



Map 3

All automobile trips that originate or end in the City of Poway for work, recreation, or any other reason



Page intentionally left blank.

Appendix A: Jurisdiction employment methodology, data sources, and other things to consider

Methodology

As a supplement to the employment center products and presentations, SANDAG has prepared this packet to showcase jurisdiction employment data. This packet was created using the same source data and methodology as the employment center products. Employment centers represent areas of employment concentration, whereas this packet refers to the jurisdictional employment in whole.

Additional technical information regarding this methodology is available by contacting the Data, Analytics, and Modeling Department at SANDAG.

Data sources and other things to consider

Longitudinal Employer-Household Dynamics (LEHD) Origin-Destination Employment Statistics (LODES) 7.3 (2015)

The Longitudinal Employer-Household Dynamics (LEHD) Origin-Destination Employment Statistics (LODES) data are a publicly available product of the U.S. Census Bureau. The LODES data are an extract of the LEHD infrastructure which is composed of administrative records, census, and survey data. The LODES data provide counts of unemployment insurance-covered wage and salary jobs, including private sector and state, local and some federal government jobs. Workplace location and residential location of an employee is measured at the census block-level (2010). The 2015 data that are used here reflect the latest available data (version 7.3) at the time of this analysis and included two primary tables: Original-Destinations (OD) (used in Highlight 5 and Maps 1 and 2), and Workplace Area Characteristics (WAC) (Highlight 2). It should be noted these data (1) contain wage and salary jobs (and exclude self-employed individuals); (2) do not include military and other security-related federal agencies, postal workers, some employees at nonprofits and religious institutions, and informal workers; (3) only includes an individual's primary job if an individual has more than one; and (4) education attainment includes only workers age 30 or older. Additional information is available at <https://lehd.ces.census.gov/data/>.

SANDAG Employment Estimates (2016)

On a regular basis, SANDAG produces estimates of employment and individual earnings for the San Diego region. These estimates were used in Fast facts and Highlights 1, 2, and 5. These estimates utilize California Employment Development Department (EDD) data, the Quarterly Census of Employment and Wages (QCEW) data, and the LEHD LODES data from the U.S. Census Bureau among other sources. The employment estimates include wage and salary for private sector and government workers, as well as the self-employed. Uniformed military are not included; however, U.S. Department of Defense (DOD) civilian workers have been assigned to military bases. Tribal government jobs are included where data were available. Additional information regarding these estimates is available by contacting the Economic and Demographic Analysis Modeling team at SANDAG.

SANDAG Population and Housing Estimates (2016)

Each year SANDAG produces estimates of population and housing for the San Diego region. These estimates utilize several data sources including the California Department of Finance, the U.S. Census Bureau, and a variety of other publicly available datasets. These small-area estimates contain information on the characteristics of the population (ethnicity, age, sex) and housing units (occupied, vacant, unoccupiable) in the region. The population living in military barracks, college dorms and other institutional facilities are included in the population and are counted in housing referred to as Group Quarters. The active military population and their dependents who live in households are included in the household population counts. The population and housing estimates are created in a process similar to the Regional Growth Forecast and contain similar information, however the Population and Housing Estimates reflect current conditions. These data are in Appendix B. Additional information regarding these estimates is available by contacting the Economic and Demographic Analysis Modeling team at SANDAG.

SANDAG Activity Based Transportation Model (2016)

To plan and complete regional transportation projects, SANDAG creates and maintains a transportation model which uses a variety of regional transportation survey and socioeconomic and demographic data (e.g., count of trips from home to work, how people carpool, what bus routes are most frequented, and which highways are used and when). These data are then utilized in the Activity Based Model (ABM) to simulate individual and household transportation choices. These choices include how individuals travel around the region (the mode), why people travel around the region (the trip purpose), and when they travel (time of day). The ABM model is refined based on transportation data and expert feedback on methodology and data sources. For this analysis, SANDAG utilized release version 14.0.1 of ABM to estimate travel for the year 2016 (reference scenario #232). Data in both Highlight 3 and 4 are restricted only to transportation trips in the model in which (1) the trip begins at home and ends at work and does not have any intermediary stops (e.g., dropping a child at school); and (2) the trip's purpose is work and (3) the trip start time is during peak periods which are defined as 6:00 a.m. to 8:59 a.m. and 3:30 p.m. to 6:59 p.m. Transit travel time includes walk time to transit stop, initial wait time, in vehicle time, transfer wait time, and walk time to the destination. Map 3 includes all auto trips (work and non-work related) to and from Poway. The margin of error might be larger for small jurisdictions with few work trips and all trips. Additional information about the ABM is available here:

sandag.org/index.asp?subclassid=120&fuseaction=home.subclasshome

Appendix B: Jurisdiction resident profile

Demographic and Socioeconomic Estimates Jurisdiction Poway



Jan 1, 2018

Total Population	50,207
Household Population	49,657
Group Quarters Population	550
Persons Per Household	3.02

Housing and Occupancy

	Total Housing Units	Households	Vacancy Rate
Total Housing Units	16,698	16,452	1.5%
Single Family - Detached	12,196	12,013	1.5%
Single Family - Attached	1,100	1,078	2.0%
Multi-Family	2,700	2,671	1.1%
Mobile Home and Other	702	690	1.7%

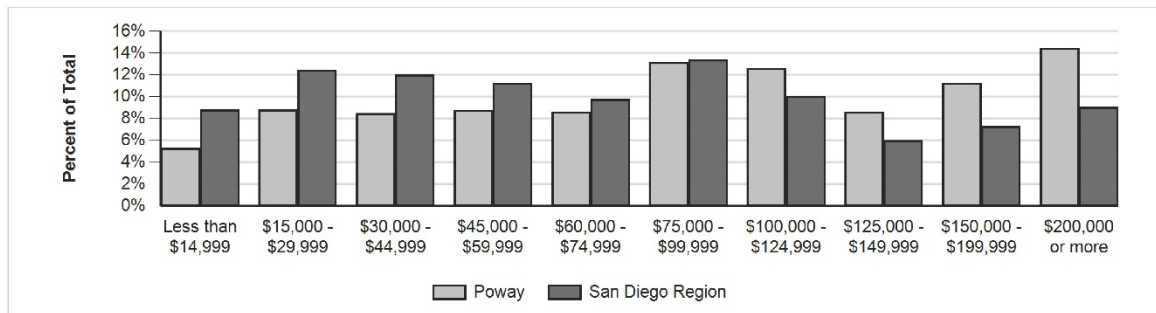
Household Income

Households by Income Category (2010 \$, adjusted for inflation)

	Less than \$15,000	\$15,000-\$29,999	\$30,000-\$44,999	\$45,000-\$59,999	\$60,000-\$74,999	\$75,000-\$99,999	\$100,000-\$124,999	\$125,000-\$149,999	\$150,000-\$199,999	\$200,000 or more
% of Total	5%	9%	8%	9%	9%	13%	13%	9%	11%	14%

Median Household Income

	2018
Adjusted for Inflation (2010 \$)	\$94,068
Not adjusted for inflation (current 2017\$)	\$106,075



IMPORTANT ADVISORY:

Caution should be taken when using data for small population groups, particularly at small levels of geography. Minor adjustments were made (such as correcting the location of housing units that were erroneously allocated by the Census Bureau to roads and open space) to more accurately reflect the region's true population and housing distribution.

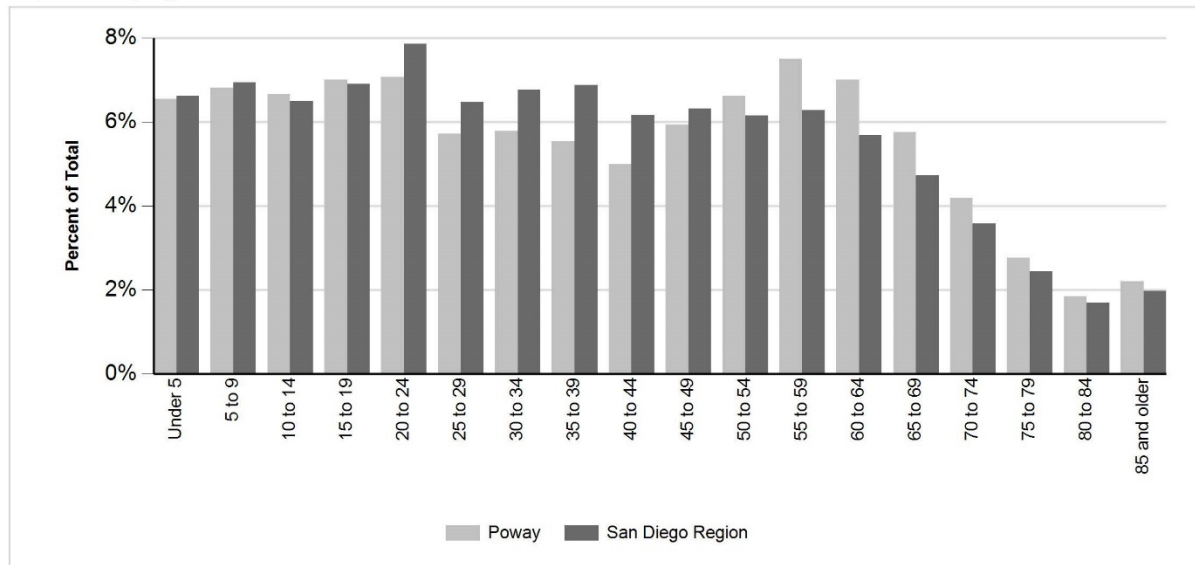
In addition, Census 2010 does not include information about structure type or household income. Those details and other demographic estimates shown here are developed from other sources, including the California Department of Finance E-5 estimates for cities and the County of San Diego; San Diego County Assessor Records, vital events records from the California Department of Health, and income data from the U.S. Census Bureau American Community Survey.

Caution should always be taken when using data for small population groups, particularly at small levels of geography.

Population by Age and Sex

	Total	Male	Female	Percent Female
Total Population	50,207	24,701	25,506	51%
Under 5	3,290	1,710	1,580	48%
5 to 9	3,422	1,727	1,695	50%
10 to 14	3,345	1,736	1,609	48%
15 to 17	2,165	1,115	1,050	48%
18 and 19	1,355	667	688	51%
20 to 24	3,547	1,784	1,763	50%
25 to 29	2,871	1,438	1,433	50%
30 to 34	2,906	1,474	1,432	49%
35 to 39	2,780	1,431	1,349	49%
40 to 44	2,505	1,239	1,266	51%
45 to 49	2,981	1,425	1,556	52%
50 to 54	3,327	1,581	1,746	52%
55 to 59	3,769	1,852	1,917	51%
60 and 61	1,464	704	760	52%
62 to 64	2,053	967	1,086	53%
65 to 69	2,891	1,406	1,485	51%
70 to 74	2,108	996	1,112	53%
75 to 79	1,392	642	750	54%
80 to 84	928	403	525	57%
85 and older	1,108	404	704	64%
Under 18	12,222	6,288	5,934	49%
65 and older	8,427	3,851	4,576	54%
Median Age	39.0	37.4	40.6	N/A

Population by Age



Source: SANDAG, Current Estimates
 SANDAG
www.sandag.org

May 25, 2019
 Poway
 Page 2 of 3

Population by Race, Ethnicity and Age

	Non-Hispanic					
	Hispanic	White	Black	American Indian	Asian & Pacific Isl.	All Other
Total Population	10,180	31,107	695	210	6,120	1,895
Under 5	1,072	1,623	47	13	279	256
5 to 9	1,052	1,718	60	21	312	259
10 to 14	983	1,656	92	24	332	258
15 to 17	588	1,106	51	18	275	127
18 and 19	376	671	35	3	179	91
20 to 24	834	2,052	60	9	416	176
25 to 29	656	1,682	27	14	388	104
30 to 34	597	1,706	37	18	422	126
35 to 39	623	1,583	43	15	420	96
40 to 44	593	1,346	25	9	464	68
45 to 49	632	1,768	42	6	460	73
50 to 54	598	2,184	39	12	423	71
55 to 59	503	2,728	41	11	418	68
60 and 61	151	1,114	10	7	155	27
62 to 64	210	1,566	18	12	222	25
65 to 69	234	2,266	19	8	334	30
70 to 74	169	1,670	19	4	225	21
75 to 79	121	1,081	13	4	161	12
80 to 84	99	690	5	1	129	4
85 and older	89	897	12	1	106	3
Under 18	3,695	6,103	250	76	1,198	900
65 and older	712	6,604	68	18	955	70
Median Age	26.4	46.2	25.5	30.8	40.4	19.0

Page intentionally left blank.

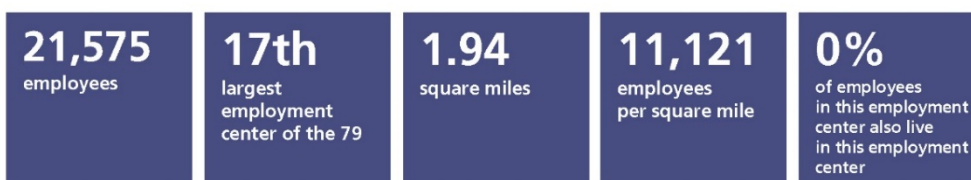
Appendix C: Employment centers located within the City of Poway



Scripps Poway employment center Tier 3 employment centers in the San Diego region¹: An analysis of where people live and work

Highlight 1

Characteristics of this employment center



Sources: SANDAG Employment Estimates, 2016; LEHD LODES OD, 7.3, 2015

Highlight 2

Industries in this employment center and the region overall

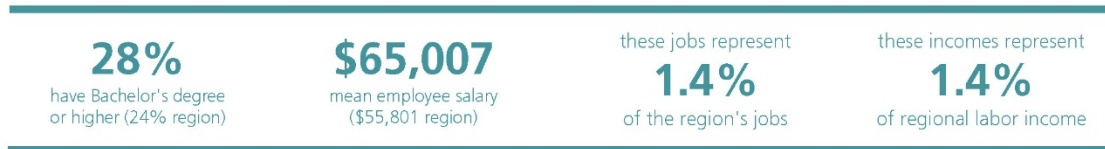
	Scripps Poway employment center		Region	
	Number of jobs	Percentage/ rank	Number of jobs	Percentage/ rank
Health care and social assistance	212	1% (10)	199,700	13% (1)
Retail trade	1,222	6% (6)	156,612	10% (2)
Professional, scientific, technical	2,013	9% (4)	148,766	10% (3)
Food services	164	1% (12)	131,594	9% (4)
Manufacturing	8,377	39% (1)	109,234	7% (5)
Administrative, support, waste services	1,059	5% (7)	91,519	6% (6)
Construction	2,498	12% (3)	83,498	5% (7)
Local government education	0	0% (19)	80,300	5% (8)
Other services	209	1% (11)	69,124	5% (9)
Finance and insurance	2,900	13% (2)	47,848	3% (10)
Wholesale trade	1,605	7% (5)	46,625	3% (11)
Arts, entertainment, recreation	135	1% (13)	45,639	3% (12)
Real estate, rental, leasing	78	<1% (15)	38,582	3% (13)
Local government	0	0% (20)	37,429	2% (14)
Transportation and warehousing	397	2% (9)	36,183	2% (15)
Accommodation	19	<1% (17)	33,094	2% (16)
Educational services	66	<1% (16)	32,892	2% (17)
State government education	0	0% (21)	31,600	2% (18)
Information	497	2% (8)	26,262	2% (19)
Department of Defense	0	0% (22)	22,500	1% (20)
Management of companies/enterprises	112	1% (14)	21,500	1% (21)
Federal government	12	<1% (18)	11,454	1% (22)
Farm	0	0% (23)	9,000	1% (23)
Utilities	0	0% (24)	7,208	<1% (24)
State government	0	0% (25)	7,037	<1% (25)
Mining and logging	0	0% (26)	300	<1% (26)
Total	21,575		1,525,500	

Source: SANDAG Employment Estimates, 2016

¹ This data summary was prepared by SANDAG and is part of an evolving analysis of where people live and work in the San Diego region. Tier 3 employment centers are those between 15,000 and 19,999 employees. For data notes, sources, and qualifications, please visit: sandag.org/employmentcenters. Suggested reference: SANDAG (2019, May). *Tier 3 employment centers in the San Diego region: Scripps Poway employment center*. San Diego, CA: Author.

Highlight 3

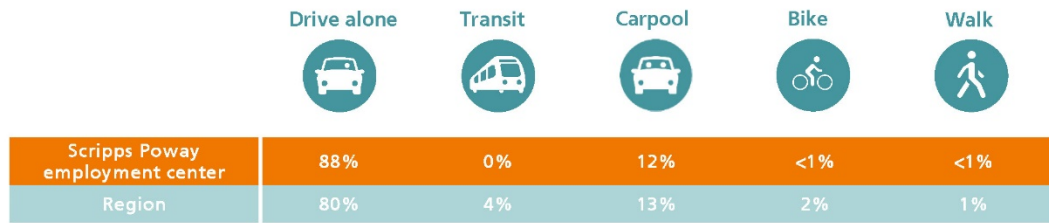
Other statistics about the education level and income of employees in this employment center



Sources: SANDAG Employment Estimates, 2016; LEHD LODES OD, 7.3, 2015

Highlight 4

What mode of transportation these employment center employees use to get to work during peak period?



Source: SANDAG Activity Based Model, 2016

Highlight 5

How far employees drive on average to get to this employment center during peak period and how long it takes them on average, by transportation mode

	Scripps Poway employment center		Region	
	Mean number of miles	Mean length of time (Minutes)	Mean number of miles	Mean length of time (Minutes)
Vehicles	15.0	30.8	12.0	25.1
Transit	NA	NA	10.7	62.8
Bike	4.4	21.8	4.3	21.6
Walk	2.2	43.9	1.2	23.2

Note: Peak period includes 6:00 a.m. to 8:59 a.m. and 3:30 p.m. to 6:59 p.m.

Source: SANDAG Activity Based Model, 2016

Highlight 6

What jurisdictions these employment center employees travel from

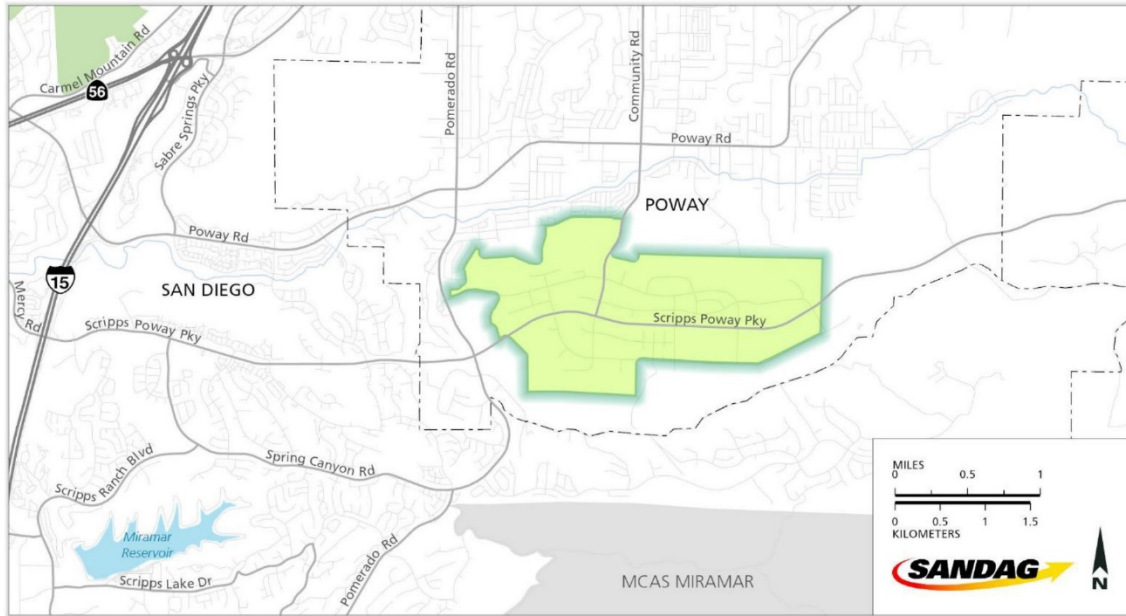
Jurisdiction	Number of workers in the employment center	Percent
San Diego	5,890	46%
Unincorporated	2,250	18%
Poway	994	8%
Escondido	743	6%
Chula Vista	506	4%
El Cajon	414	3%
Santee	409	3%
San Marcos	277	2%
Carlsbad	228	2%
La Mesa	224	2%
Oceanside	216	2%
Vista	189	2%
National City	169	1%
Encinitas	125	1%
Lemon Grove	90	1%
Imperial Beach	65	1%
Solana Beach	40	<1%
Coronado	23	<1%
Del mar	7	<1%
Total	12,859	

Note: The total number of employees shown here is lower than presented elsewhere because employees who travel from outside the region or have an unknown origin location are excluded and only primary jobs are included.

Source: SANDAG Employment Estimates, 2016; LEHD LODES OD, 7.3, 2015

Map 1

Scripps Poway employment center



Rancho Bernardo employment center

Tier 3 employment centers in the San Diego region¹: An analysis of where people live and work

Highlight 1

Characteristics of this employment center

16,542 employees	22nd largest employment center of the 79	1.79 square miles	9,241 employees per square mile	.3% of employees in this employment center also live in this employment center
----------------------------	--	-----------------------------	--	--

Sources: SANDAG Employment Estimates, 2016; LEHD LODES OD, 7.3, 2015

Highlight 2

Industries in this employment center and the region overall

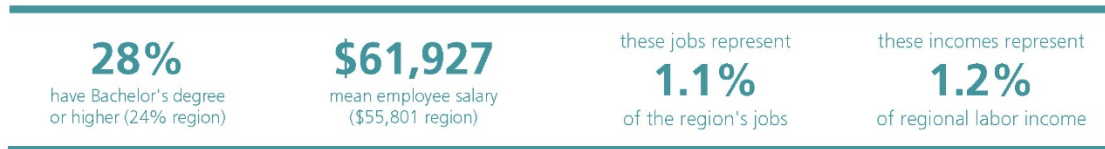
	Rancho Bernardo employment center		Region	
	Number of jobs	Percentage/ rank	Number of jobs	Percentage/ rank
Health care and social assistance	4,895	30% (1)	199,700	13% (1)
Retail trade	2,596	16% (2)	156,612	10% (2)
Professional, scientific, technical	1,415	9% (4)	148,766	10% (3)
Food services	1,788	11% (3)	131,594	9% (4)
Manufacturing	1,136	7% (6)	109,234	7% (5)
Administrative, support, waste services	161	1% (16)	91,519	6% (6)
Construction	400	2% (8)	83,498	5% (7)
Local government education	0	0% (18)	80,300	5% (8)
Other services	292	2% (12)	69,124	5% (9)
Finance and insurance	870	5% (7)	47,848	3% (10)
Wholesale trade	185	1% (13)	46,625	3% (11)
Arts, entertainment, recreation	164	1% (15)	45,639	3% (12)
Real estate, rental, leasing	317	2% (11)	38,582	3% (13)
Local government	0	0% (19)	37,429	2% (14)
Transportation and warehousing	1,368	8% (5)	36,183	2% (15)
Accommodation	77	1% (17)	33,094	2% (16)
Educational services	164	1% (14)	32,892	2% (17)
State government education	0	0% (20)	31,600	2% (18)
Information	394	2% (9)	26,262	2% (19)
Department of Defense	0	0% (21)	22,500	1% (20)
Management of companies/enterprises	320	2% (10)	21,500	1% (21)
Federal government	0	0% (22)	11,454	1% (22)
Farm	0	0% (23)	9,000	1% (23)
Utilities	0	0% (24)	7,208	<1% (24)
State government	0	0% (25)	7,037	<1% (25)
Mining and logging	0	0% (26)	300	<1% (26)
Total	16,542		1,525,500	

Source: SANDAG Employment Estimates, 2016

¹ This data summary was prepared by SANDAG and is part of an evolving analysis of where people live and work in the San Diego region. Tier 3 employment centers are those between 15,000 and 19,999 employees. For data notes, sources, and qualifications, please visit: sandag.org/employmentcenters. Suggested reference: SANDAG (2019, May). *Tier 3 employment centers in the San Diego region: Rancho Bernardo employment center*. San Diego, CA: Author.

Highlight 3

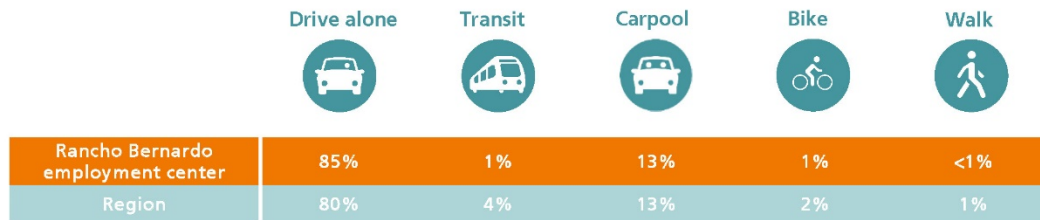
Other statistics about the education level and income of employees in this employment center



Sources: SANDAG Employment Estimates, 2016; LEHD LODES OD, 7.3, 2015

Highlight 4

What mode of transportation these employment center employees use to get to work during peak period?



Source: SANDAG Activity Based Model, 2016

Highlight 5

How far employees drive on average to get to this employment center during peak period and how long it takes them on average, by transportation mode

	Rancho Bernardo employment center		Region	
	Mean number of miles	Mean length of time (Minutes)	Mean number of miles	Mean length of time (Minutes)
Vehicles	13.5	27.2	12.0	25.1
Transit	12.6	82.8	10.7	62.8
Bike	2.8	14.1	4.3	21.6
Walk	1.5	29.8	1.2	23.2

Note: Peak period includes 6:00 a.m. to 8:59 a.m. and 3:30 p.m. to 6:59 p.m.

Source: SANDAG Activity Based Model, 2016

Highlight 6

What jurisdictions these employment center employees travel from

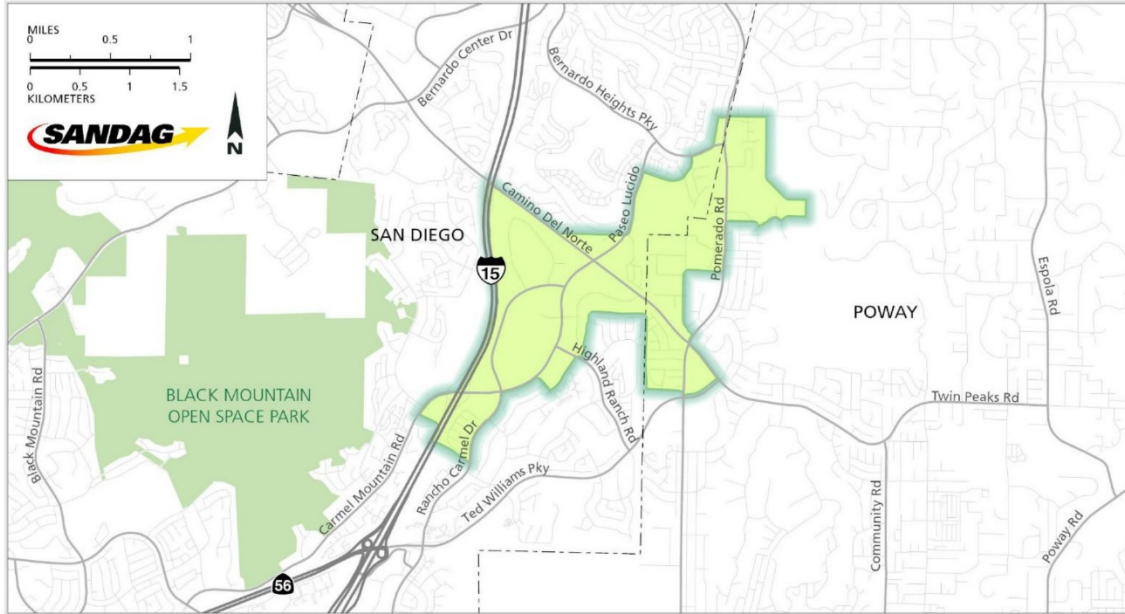
Jurisdiction	Number of workers in the employment center	Percent
San Diego	2,877	49%
Unincorporated	768	13%
Poway	438	7%
Escondido	435	7%
Carlsbad	213	4%
San Marcos	195	3%
Chula Vista	157	3%
Vista	134	2%
Encinitas	128	2%
Santee	127	2%
El Cajon	126	2%
La Mesa	94	2%
Oceanside	94	2%
National City	45	1%
Imperial Beach	25	<1%
Lemon Grove	25	<1%
Solana Beach	23	<1%
Coronado	17	<1%
Del Mar	8	<1%
Total	5,929	

Note: The total number of employees shown here is lower than presented elsewhere because employees who travel from outside the region or have an unknown origin location are excluded and only primary jobs are included.

Source: SANDAG Employment Estimates, 2016; LEHD LODES OD, 7.3, 2015

Map 1

Rancho Bernardo employment center



Poway employment center

Tier 4 employment centers in the San Diego region¹: An analysis of where people live and work

Highlight 1

Characteristics of this employment center

6,609 employees	54th largest employment center of the 79	1.5 square miles	4,406 employees per square mile	3.1% of employees in this employment center also live in this employment center
---------------------------	--	----------------------------	--	---

Sources: SANDAG Employment Estimates, 2016; LEHD LODES OD, 7.3, 2015

Highlight 2

Industries in this employment center and the region overall

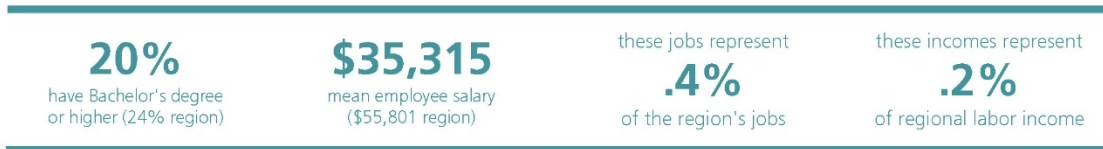
	Poway employment center		Region	
	Number of jobs	Percentage/ rank	Number of jobs	Percentage/ rank
Health care and social assistance	844	13% (3)	199,700	13% (1)
Retail trade	1,971	30% (1)	156,612	10% (2)
Professional, scientific, technical	429	7% (6)	148,766	10% (3)
Food services	900	14% (2)	131,594	9% (4)
Manufacturing	9	<1% (17)	109,234	7% (5)
Administrative, support, waste services	86	1% (12)	91,519	6% (6)
Construction	444	7% (5)	83,498	5% (7)
Local government education	6	<1% (19)	80,300	5% (8)
Other services	706	11% (4)	69,124	5% (9)
Finance and insurance	180	3% (10)	47,848	3% (10)
Wholesale trade	32	1% (15)	46,625	3% (11)
Arts, entertainment, recreation	185	3% (9)	45,639	3% (12)
Real estate, rental, leasing	141	2% (11)	38,582	3% (13)
Local government	316	5% (7)	37,429	2% (14)
Transportation and warehousing	68	1% (13)	36,183	2% (15)
Accommodation	14	<1% (16)	33,094	2% (16)
Educational services	205	3% (8)	32,892	2% (17)
State government education	0	0% (21)	31,600	2% (18)
Information	61	1% (14)	26,262	2% (19)
Department of Defense	0	0% (22)	22,500	1% (20)
Management of companies/enterprises	8	<1% (18)	21,500	1% (21)
Federal government	0	0% (23)	11,454	1% (22)
Farm	0	0% (24)	9,000	1% (23)
Utilities	4	<1% (20)	7,208	<1% (24)
State government	0	0% (25)	7,037	<1% (25)
Mining and logging	0	0% (26)	300	<1% (26)
Total	6,609		1,525,500	

Source: SANDAG Employment Estimates, 2016

¹ This data summary was prepared by SANDAG and is part of an evolving analysis of where people live and work in the San Diego region. Tier 4 employment centers are those between 2,000 and 14,999 employees. For data notes, sources, and qualifications, please visit: sandag.org/employmentcenters. Suggested reference: SANDAG (2019, May). *Tier 4 employment centers in the San Diego region: Poway employment center*. San Diego, CA: Author.

Highlight 3

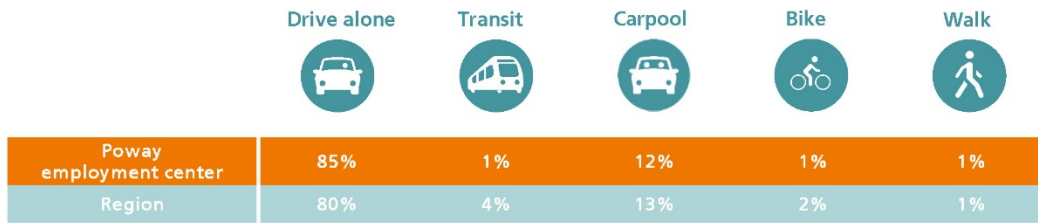
Other statistics about the education level and income of employees in this employment center



Sources: SANDAG Employment Estimates, 2016; LEHD LODES OD, 7.3, 2015

Highlight 4

What mode of transportation these employment center employees use to get to work during peak period?



Source: SANDAG Activity Based Model, 2016

Highlight 5

How far employees drive on average to get to this employment center during peak period and how long it takes them on average, by transportation mode

	Poway employment center		Region	
	Mean number of miles	Mean length of time (Minutes)	Mean number of miles	Mean length of time (Minutes)
Vehicles	13.9	28.6	12.0	25.1
Transit	9.2	59.7	10.7	62.8
Bike	2.5	12.7	4.3	21.6
Walk	.8	16.0	1.2	23.2

Note: Peak period includes 6:00 a.m. to 8:59 a.m. and 3:30 p.m. to 6:59 p.m.

Source: SANDAG Activity Based Model, 2016

Highlight 6

What jurisdictions these employment center employees travel from

Jurisdiction	Number of workers in the employment center	Percent
San Diego	1,056	38%
Unincorporated	474	17%
Poway	436	16%
Escondido	194	7%
El Cajon	106	4%
Chula Vista	88	3%
San Marcos	71	3%
Vista	61	2%
Santee	60	2%
Oceanside	60	2%
La Mesa	46	2%
Carlsbad	43	2%
Encinitas	41	2%
National City	21	1%
Imperial Beach	18	1%
Lemon Grove	12	<1%
Solana Beach	8	<1%
Coronado	1	<1%
Del Mar	0	0%
Total	2,796	

Note: The total number of employees shown here is lower than presented elsewhere because employees who travel from outside the region or have an unknown origin location are excluded and only primary jobs are included.

Source: SANDAG Employment Estimates, 2016; LEHD LODES OD, 7.3, 2015

Map 1

Poway employment center

