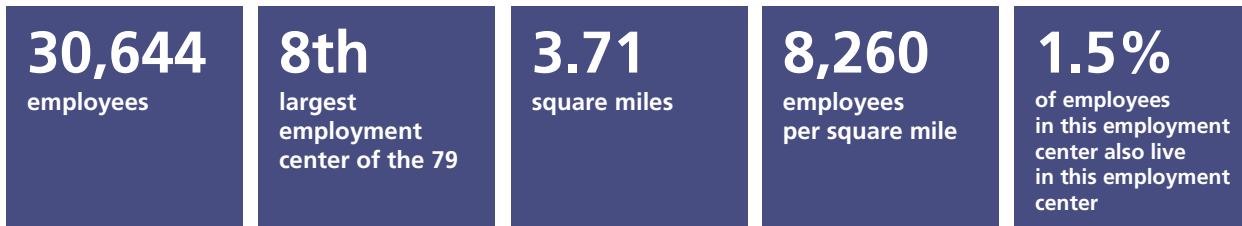


Escondido – Palomar employment center

Tier 2 employment centers in the San Diego region¹: An analysis of where people live and work

Highlight 1

Characteristics of this employment center



Sources: SANDAG Employment Estimates, 2016; LEHD LODES OD, 7.3, 2015

Highlight 2

Industries in this employment center and the region overall

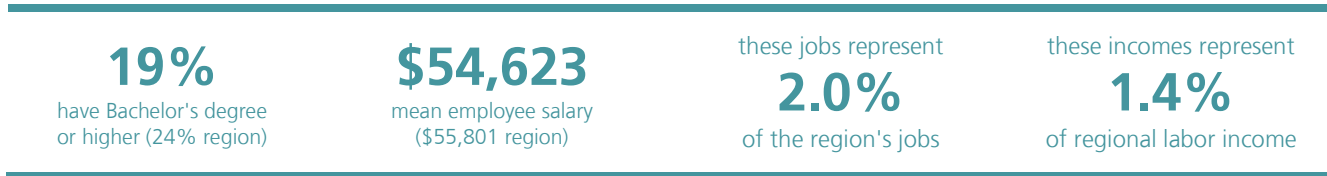
	Escondido – Palomar employment center		Region	
	Number of jobs	Percentage/ rank	Number of jobs	Percentage/ rank
Health care and social assistance	2,577	8% (5)	199,700	13% (1)
Retail trade	4,924	16% (2)	156,612	10% (2)
Professional, scientific, technical	1,865	6% (6)	148,766	10% (3)
Food services	1,683	6% (7)	131,594	9% (4)
Manufacturing	2,830	9% (3)	109,234	7% (5)
Administrative, support, waste services	2,654	9% (4)	91,519	6% (6)
Construction	7,783	25% (1)	83,498	5% (7)
Local government education	736	2% (10)	80,300	5% (8)
Other services	1,510	5% (8)	69,124	5% (9)
Finance and insurance	482	2% (13)	47,848	3% (10)
Wholesale trade	1,045	3% (9)	46,625	3% (11)
Arts, entertainment, recreation	90	<1% (19)	45,639	3% (12)
Real estate, rental, leasing	510	2% (12)	38,582	3% (13)
Local government	0	0% (23)	37,429	2% (14)
Transportation and warehousing	550	2% (11)	36,183	2% (15)
Accommodation	65	<1% (20)	33,094	2% (16)
Educational services	301	1% (16)	32,892	2% (17)
State government education	0	0% (24)	31,600	2% (18)
Information	365	1% (14)	26,262	2% (19)
Department of Defense	0	0% (25)	22,500	1% (20)
Management of companies/enterprises	347	1% (15)	21,500	1% (21)
Federal government	10	<1% (22)	11,454	1% (22)
Farm	100	<1% (18)	9,000	1% (23)
Utilities	202	1% (17)	7,208	<1% (24)
State government	15	<1% (21)	7,037	<1% (25)
Mining and logging	0	0% (26)	300	<1% (26)
Total	30,644		1,525,500	

Source: SANDAG Employment Estimates, 2016

¹ This data summary was prepared by SANDAG and is part of an evolving analysis of where people live and work in the San Diego region. Tier 2 employment centers are those between 20,000 and 40,000 employees. For data notes, sources, and qualifications, please visit: sandag.org/employmentcenters. Suggested reference: SANDAG (2019, May). *Tier 2 employment centers in the San Diego region: Escondido – Palomar employment center*. San Diego, CA: Author.

Highlight 3

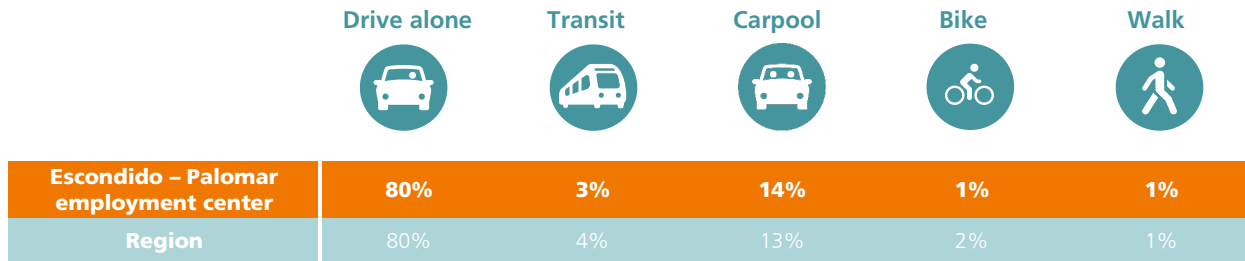
Other statistics about the education level and income of employees in this employment center



SOURCES: SANDAG Employment Estimates, 2016; LEHD LODES OD, 7.3, 2015

Highlight 4

What mode of transportation these employment center employees use to get to work during peak period?



Source: SANDAG Activity Based Model, 2016

Highlight 5

How far employees drive on average to get to this employment center during peak period and how long it takes them on average, by transportation mode

	Escondido – Palomar employment center		Region	
	Mean number of miles	Mean length of time (Minutes)	Mean number of miles	Mean length of time (Minutes)
Vehicles	11.2	21.0	12.0	25.1
Transit	10.7	67.4	10.7	62.8
Bike	4.5	22.4	4.3	21.6
Walk	1.8	36.5	1.2	23.2

Note: Peak period includes 6:00 a.m. to 8:59 a.m. and 3:30 p.m. to 6:59 p.m.

Source: SANDAG Activity Based Model, 2016

Highlight 6

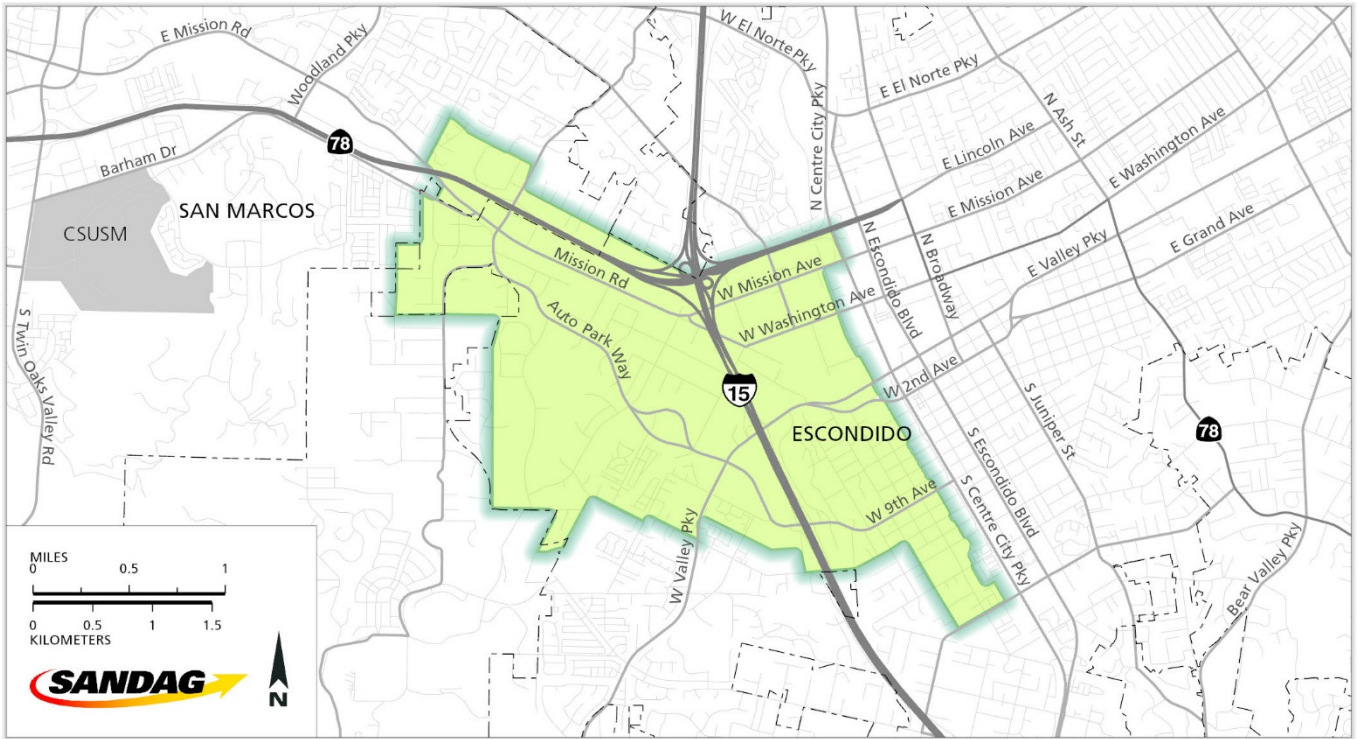
What jurisdictions these employment center employees travel from

Jurisdiction	Number of workers in the employment center	Percent
Escondido	4,311	29%
Unincorporated	2,765	19%
San Diego	2,321	16%
San Marcos	1,302	9%
Oceanside	1,107	7%
Vista	936	6%
Carlsbad	551	4%
Chula Vista	333	2%
Poway	308	2%
Encinitas	278	2%
El Cajon	196	1%
La Mesa	125	1%
Santee	113	1%
National City	71	1%
Imperial Beach	65	<1%
Solana Beach	53	<1%
Lemon Grove	42	<1%
Coronado	29	<1%
Del Mar	10	<1%
TOTAL	14,916	

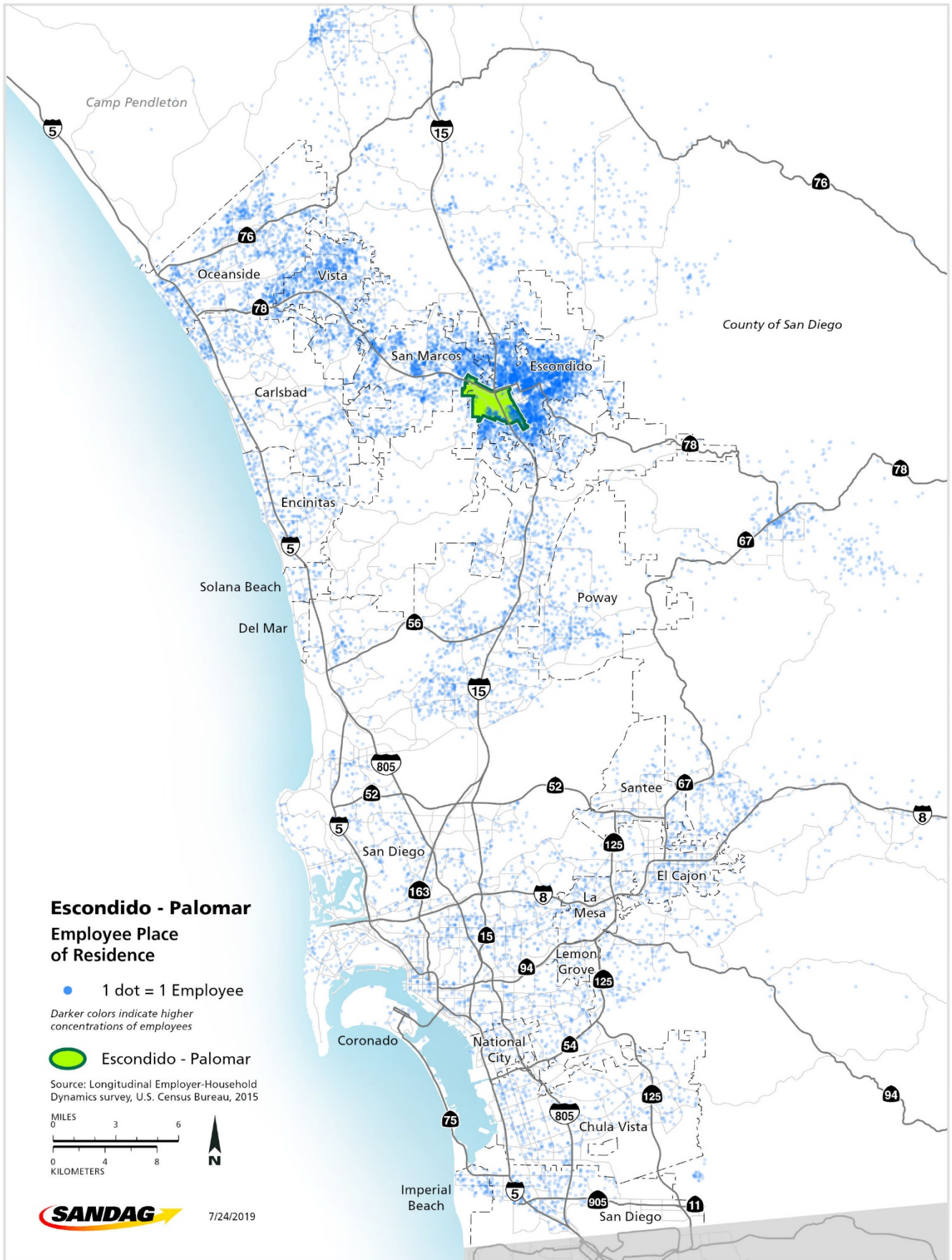
Note: The total number of employees shown here is lower than presented elsewhere because employees who travel from outside the region or have an unknown origin location are excluded and only primary jobs are included.

Source: SANDAG Employment Estimates, 2016; LEHD LODES OD, 7.3, 2015

Escondido – Palomar employment center



Where do Escondido – Palomar employment center employees live?



How far employees in the Escondido – Palomar employment center have to travel

