

# Reconnecting Communities

## Fact Sheet

The regionwide Reconnecting Communities Study will try to identify where highway and rail transportation infrastructure has created barriers and negatively impacted communities. Based on technical analysis and community input, this study will define and prioritize solutions that seek to reconnect historically underserved communities with the goal of improving access to jobs, education, healthcare, and recreation.

The final report from this study will outline proposed solutions for seven focus areas and allow cities and partner agencies to pursue future funding opportunities for design and construction.

### Goals and Benefits

The study will identify community-centered solutions that:

- Reconnect communities harmed by past transportation infrastructure decisions
- Reduce the barriers created by highways and railroads in communities
- Enhance people's connections to key community destinations

The identified solutions will benefit focus area communities by:

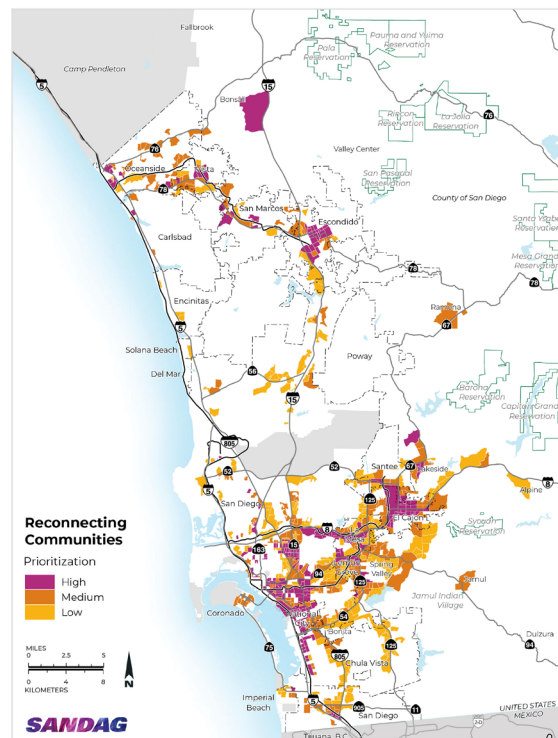
- Reducing safety concerns and traffic conflicts by enhancing walking, biking, and other travel options across highway and railroad barriers
- Creating safer and more comfortable connections across highways and railroads and supporting seamless travel between neighborhoods
- Improving economic opportunities and reconnecting people to community services and amenities

This study will also help the entire region by identifying improvements that might be used in other communities experiencing similar barriers.

### Solutions under Consideration

The study will outline a variety of solutions, including but not limited to:

- Enhanced lighting
- Beautification of space (art)
- Intersection and at-grade crossings
- Placemaking strategies
- Transit priority improvements
- Grade separation improvements
- Enhanced pedestrian and bicycle infrastructure



### Focus Areas

SANDAG, in partnership with Caltrans, will study the following seven focus areas in the San Diego region:

- Vista
- Escondido
- El Cajon
- Lemon Grove and La Mesa
- National City
- Southeast San Diego
- Barrio Logan and Logan Heights

## Reconnecting Communities

### Study Timeline

- Winter 2026: Project kickoff
- Winter 2026: Outreach and engagement
- Winter/spring 2026: Development and prioritization of solutions
- Summer 2026: Final report

After the solutions are chosen, we will review and finalize the draft solutions using technical analysis and feedback from local city staff, Caltrans staff, community-based organizations (CBOs), and community members. The final report containing the proposed solutions will be developed by summer 2026. With the information from that report, cities and agencies can seek funding to design and construct the proposed solutions through grants and other funding sources.

### For More Information

Visit [SANDAG.org/reconnecting](https://SANDAG.org/reconnecting)

Email [reconnect@sandag.org](mailto:reconnect@sandag.org)



### About SANDAG

SANDAG is the regional agency that connects people, places, and innovative ideas by implementing solutions with our unique and diverse communities. We are committed to creating a San Diego region where every person who visits, works, and lives can thrive.

Free Language Assistance | Ayuda gratuita con el idioma | Librang Tulong sa Wika | Hỗ trợ ngôn ngữ miễn phí  
 免費語言協助 | 免費語言協助 | مساعدة ترجمة مجانية | 무료 언어 지원 | کمک زبان رایگان | 無料の言語支援 | Бесплатная языковая помощь  
 Assistência linguística gratuita | मुफ्त भाषा सहायता | Assistance linguistique gratuite | ជំនួយភាសាឥតគិតថ្លៃ  
 ఉచిత భాషా సహాయం | ການຊ່ວຍເຫຼືອດ້ານພາສາພິທີ | Kaalmada Luqadda ee Bilaashka ah | Безкоштовна мовна допомога



[SANDAG.org/languageassistance](https://SANDAG.org/languageassistance) | 619.699.1900