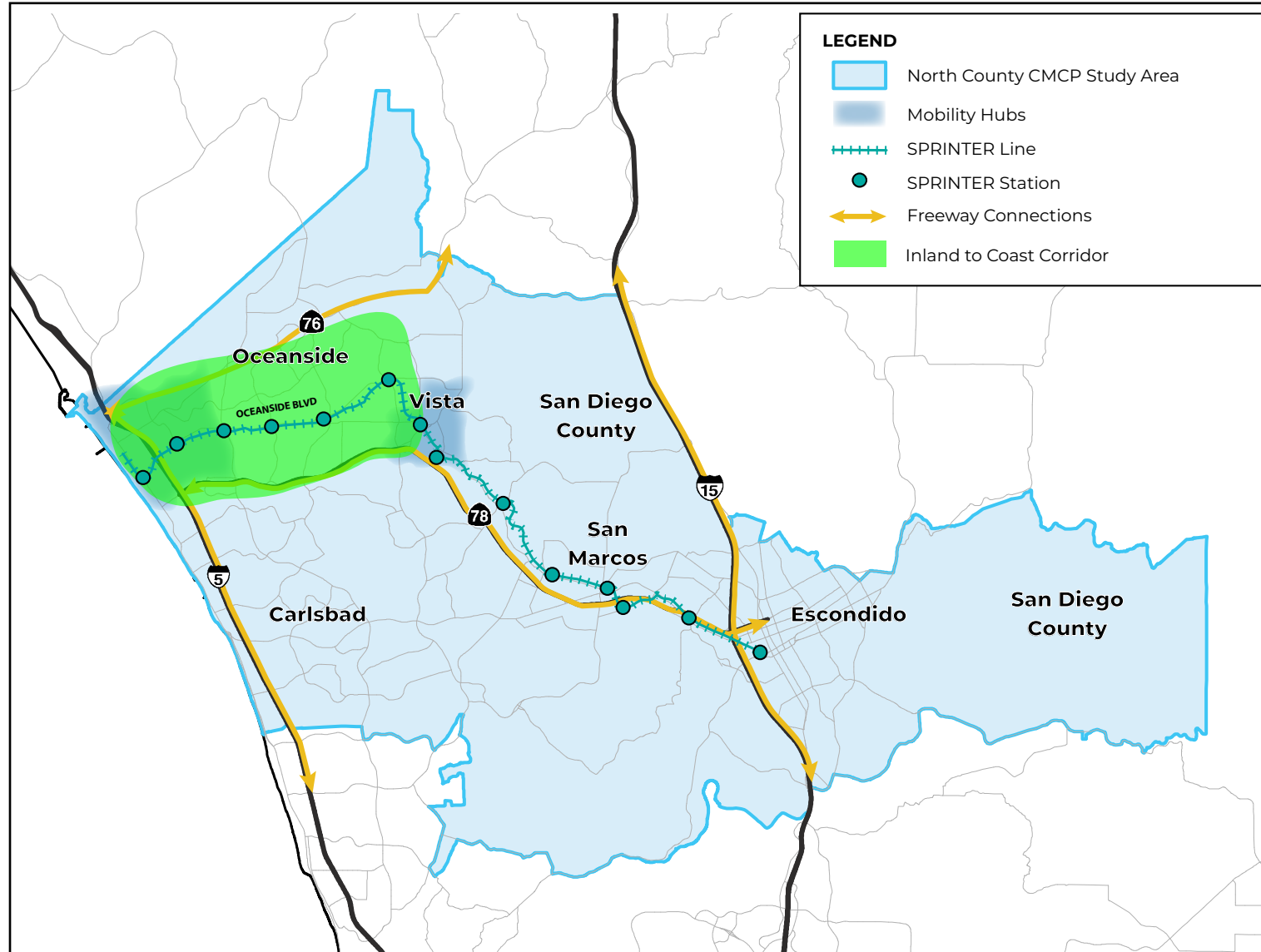


- Connect inland communities to the coast (and vice versa)
- Provide a connection to the western regional spine
- Support a mix of employment and residential centers with future development intensity

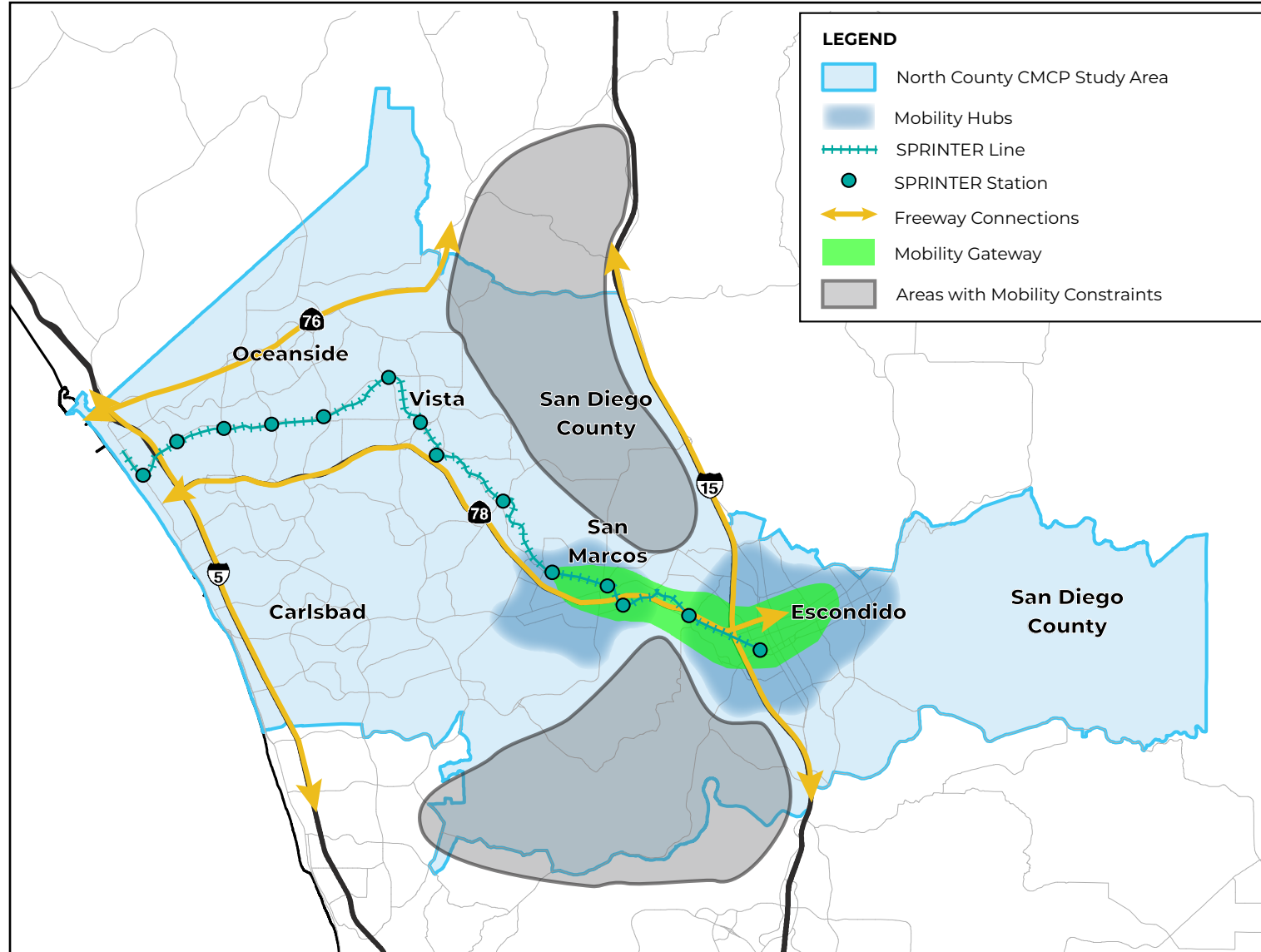


Projects from 'The Plan'

Plan ID	Plan Name
NC03	Oceanside Boulevard Corridor-Wide Mobility Boulevard Improvements and Enhancements
NC06	Vista Way Corridor-Wide Mobility Boulevard Improvements and Enhancements
NC08	Rancho Santa Fe Road Corridor-Wide Mobility Boulevard Improvements and Enhancements
NC14	Mobility Hub: Oceanside Suite of Improvements
NC25	SR 78 Operational Improvements and Managed Lanes
NC30	I-5/SR 78 Interchange
NC31	Inland Rail Trail Destination Connections
NC39	SPRINTER Double Tracking
NC42	Connecting Communities Across Regional Spines
NC44	SPRINTER Grade Separations
NC45	SPRINTER Electrification
NC47	SPRINTER Station Access Improvemnets
NC48	BRT: SPRINTER Parallel

The projects from 'The Plan' are furthered described in detail in Attachment 4.

- Improve a narrow, geographically constrained transportation connection
- Support maturing mobility hubs at either end of the gateway
- Influence transportation improvements across North County and the surrounding mega region



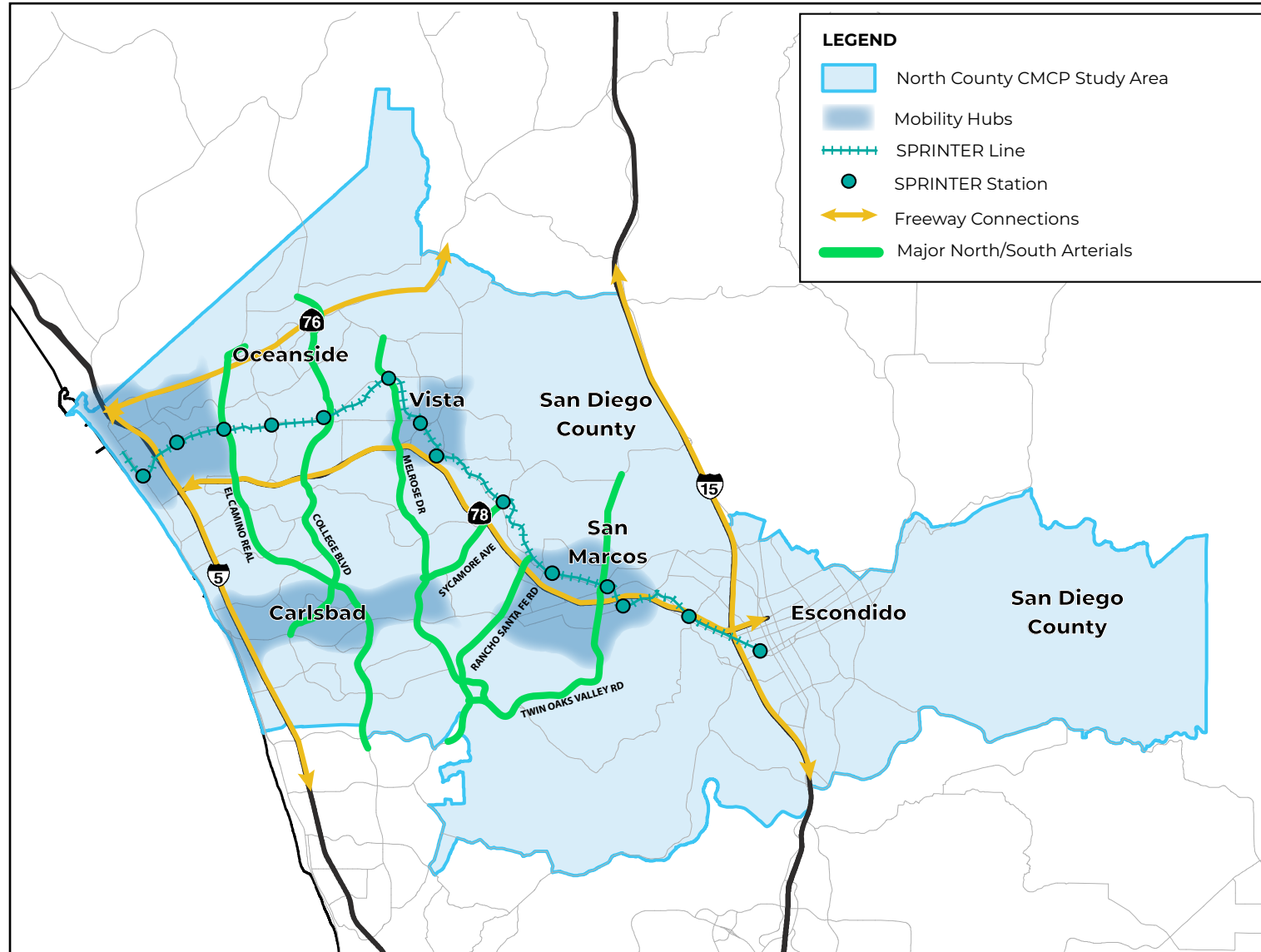
Projects from 'The Plan'

Plan ID	Plan Name
NC13	Valley Parkway Corridor-Wide Mobility Boulevard Improvements and Enhancements
NC17	Mobility Hub: Escondido Suite of Improvements
NC20	I-15/SR 78 Interchange
NC23	BRT: Escondido (<i>Rapid 471</i>)
NC25	SR 78 Operational Improvements and Managed Lanes
NC31	Inland Rail Trail Destination Connections
NC33	<i>Rapid 450</i>
NC39	SPRINTER Double Tracking
NC40	SPRINTER Service Extensions
NC42	Connecting Communities Across Regional Spines
NC44	SPRINTER Grade Separations
NC45	SPRINTER Electrification
NC47	SPRINTER Station Access Improvements
NC48	BRT: SPRINTER Parallel

The projects from 'The Plan' are further described in detail in Attachment 4.

Early Action: Major North/South Arterials

- Improve a 15-mile stretch without high-capacity transportation facilities between I-5 and I-15
- Address the growing demand on a grid complementing San Marcos Blvd. and Palomar Airport Road, SR 78, Oceanside Blvd, and SR 76



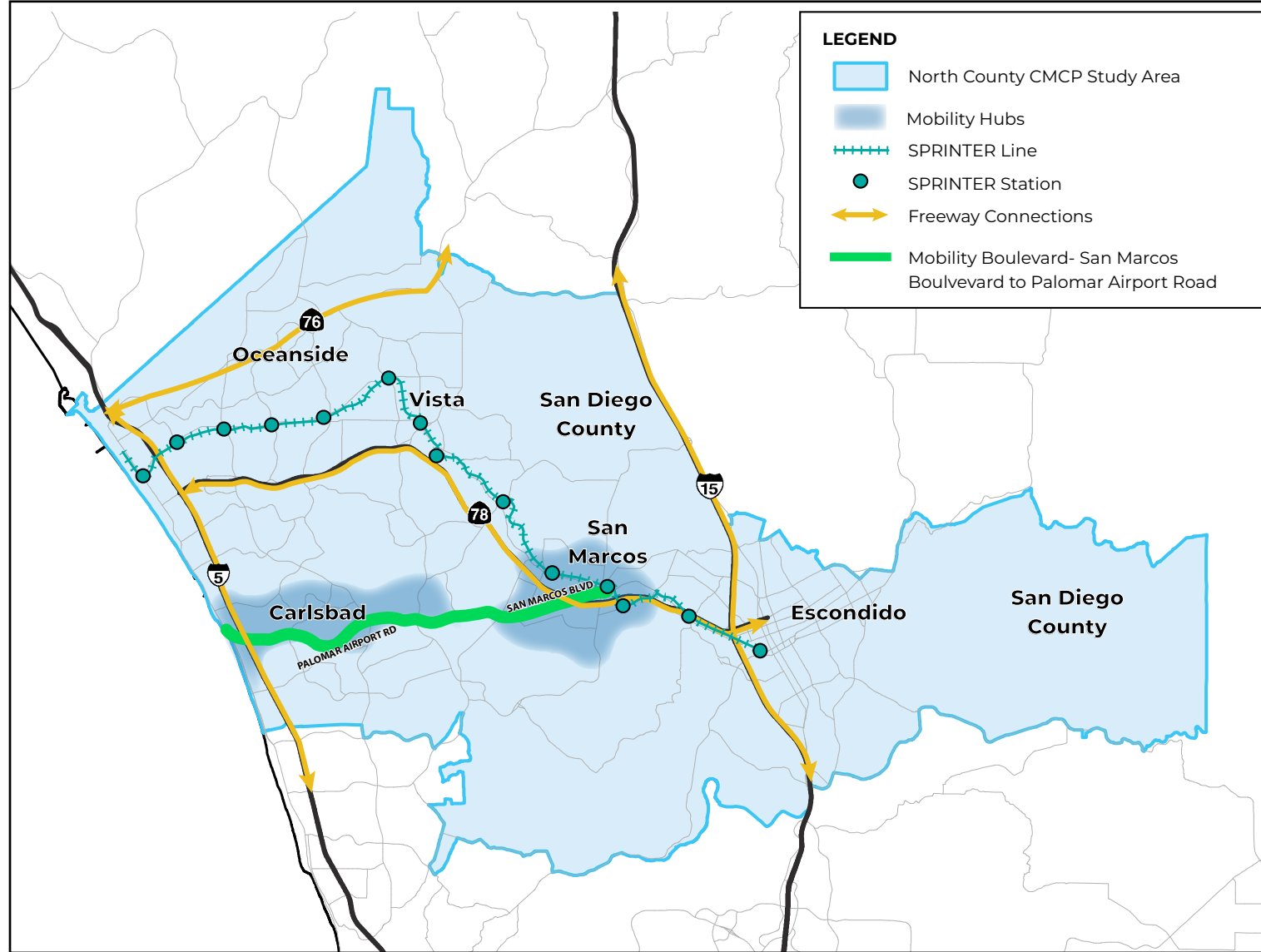
Projects from 'The Plan'

Plan ID	Plan Name
NC02	El Camino Real Corridor-Wide Mobility Boulevard Improvements and Enhancements
NC04	College Boulevard Corridor-Wide Mobility Boulevard Improvements and Enhancements
NC05	Melrose Drive Corridor-Wide Mobility Boulevard Improvements and Enhancements
NC07	Sycamore Avenue Corridor-Wide Mobility Boulevard Improvements and Enhancements
NC08	Rancho Santa Fe Road Corridor-Wide Mobility Boulevard Improvements and Enhancements
NC11	Twin Oaks Valley/San Elijo Corridor-Wide Mobility Boulevard Improvements and Enhancements
NC21	BRT: College Boulevard
NC22	BRT: El Camino Real
NC24	BRT: Melrose
NC41	Communication Backbone/Fiber
NC43	Regional Highway and Arterial TSMO, Regional Traffic Signal Management System
NC47	SPRINTER Station Access Improvemnets

The projects from 'The Plan' are furthered described in detail in Attachment 4.

Early Action: Mobility Boulevard - San Marcos and Palomar Airport Road

- Enhance a key east-west corridor between SR 78 and I-5
- Connect education institutions, employment centers, and North County destinations
- Support expected increase of development along the corridor

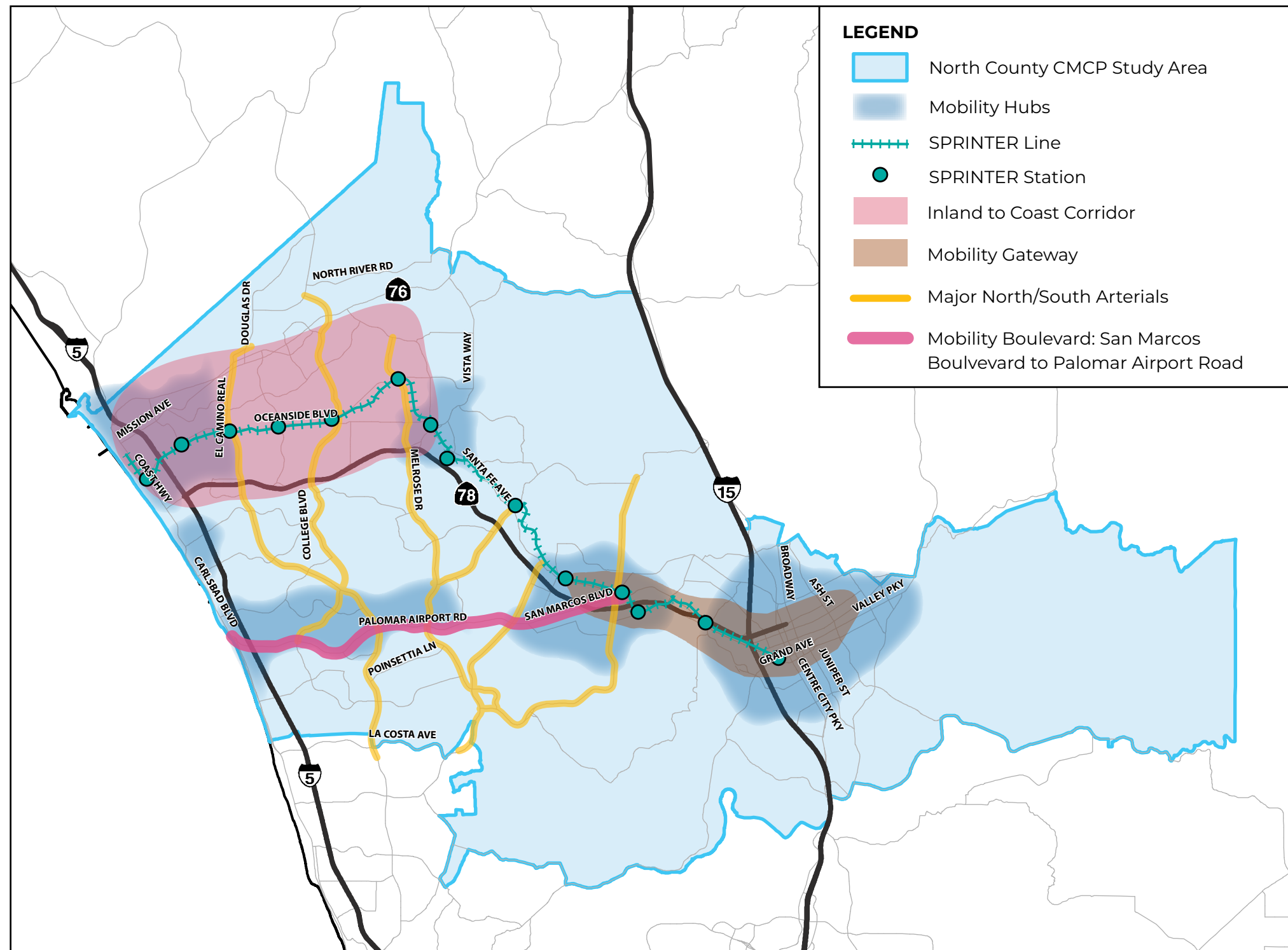


Projects from 'The Plan'

Plan ID	Plan Name
NC09	Palomar Airport Road/San Marcos Boulevard Corridor-Wide Mobility Boulevard Improvements and Enhancements
NC19	Mobility Hub: Palomar Airport Road/Carlsbad Business Park Suite of Improvements
NC32	BRT: Palomar Airport Rd (<i>Rapid 440</i>)
NC33	<i>Rapid 450</i>
NC41	Communication Backbone/Fiber
NC42	Connecting Communities Across Regional Spines
NC43	Regional Highway and Arterial TSMO, Regional Traffic Signal Management System
NC47	SPRINTER Station Access Improvemnets

The projects from 'The Plan' are furthered described in detail in Attachment 4.

Early Action Bundle Locations



Early Action Bundles

Inland to Coast Corridor

- Connect inland and coastal communities
- Provide a connection to the I-5, the COASTER, and Amtrak
- Support a mix of employment and residential centers with future development intensity

Mobility Gateway

- Improve a narrow, geographically constrained transportation connection
- Support maturing mobility hubs in Escondido and San Marcos
- Influence transportation access across North County and the surrounding mega region

Major North/South Arterials

- Improve a 15-mile stretch without high-capacity transportation facilities between I-5 and I-15
- Address the growing demand on a grid complementing San Marcos and Palomar Airport Road, SR 78, Oceanside Boulevard, and SR 76

Mobility Boulevard: San Marcos Boulevard to Palomar Airport Road

- Enhance a key east-west corridor between SR 78 and I-5
- Connect education institutions, employment centers, and North County destinations
- Support development along the corridor

Projects from 'The Plan'

Plan ID	Plan Name	Inland to Coast	Mobility Gateway	Major North/South Arterials	Mobility Boulevard: San Marcos and Palomar Airport Road
NC01	Mission Avenue Corridor-Wide Mobility Boulevard Improvements and Enhancements	Partial	No	No	No
NC02	El Camino Real Corridor-Wide Mobility Boulevard Improvements and Enhancements	Partial	No	Yes	Related
NC03	Oceanside Boulevard Corridor-Wide Mobility Boulevard Improvements and Enhancements	Yes	No	No	No
NC04	College Boulevard Corridor-Wide Mobility Boulevard Improvements and Enhancements	Partial	No	Yes	Related
NC05	Melrose Drive Corridor-Wide Mobility Boulevard Improvements and Enhancements	Partial	No	Yes	Related
NC06	Vista Way Corridor-Wide Mobility Boulevard Improvements and Enhancements	Yes	No	No	No
NC07	Sycamore Avenue Corridor-Wide Mobility Boulevard Improvements and Enhancements	No	No	Yes	No
NC08	Rancho Santa Fe Road Corridor-Wide Mobility Boulevard Improvements and Enhancements	Yes	No	Yes	Related
NC09	Palomar Airport Road/San Marcos Boulevard Corridor-Wide Mobility Boulevard Improvements and Enhancements	No	Partial	Related	Yes
NC10	Santa Fe Avenue/Mission Road Corridor-Wide Mobility Boulevard Improvements and Enhancements	Partial	Partial	Related	Related
NC11	Twin Oaks Valley/San Elijo Corridor-Wide Mobility Boulevard Improvements and Enhancements	No	Partial	Yes	Related
NC12	Centre City Parkway Corridor-Wide Mobility Boulevard Improvements and Enhancements	No	Partial	No	No
NC13	Valley Parkway Corridor-Wide Mobility Boulevard Improvements and Enhancements	No	Yes	No	No
NC14	Mobility Hub: Oceanside Suite of Improvements	Yes	No	No	No
NC15	Mobility Hub: Vista Suite of Improvements	Partial	No	Partial	No
NC16	Mobility Hub: San Marcos Suite of Improvements	No	Partial	Partial	Related

Projects from 'The Plan'

Plan ID	Plan Name	Inland to Coast	Mobility Gateway	Major North/South Arterials	Mobility Boulevard: San Marcos and Palomar Airport Road
NC17	Mobility Hub: Escondido Suite of Improvements	No	Yes	No	No
NC18	Mobility Hub: Carlsbad Village Suite of Improvements	Related	No	No	No
NC19	Mobility Hub: Palomar Airport Road/Carlsbad Business Park Suite of Improvements	No	No	Partial	Yes
NC20	I-15/SR 78 Interchange	Partial	Yes	No	Related
NC21	BRT: College Boulevard	Partial	No	Yes	Related
NC22	BRT: El Camino Real	Partial	No	Yes	Related
NC23	BRT: Escondido (<i>Rapid 471</i>)	No	Yes	No	No
NC24	BRT: Melrose	Partial	No	Yes	Related
NC25	SR 78 Operational Improvements and Managed Lanes	Yes	Yes	Related	Related
NC26	Coastal Rail Trail	Partial	No	No	Related
NC27	North County Roundabouts Programs	Related	Related	Related	Related
NC28	BRT: Mission Avenue/ SR 76	Partial	No	No	No
NC29	BRT: Mission Avenue/Santa Fe Avenue (<i>Rapid 474</i>)	Related	No	No	No
NC30	I-5/SR 78 Interchange	Yes	No	No	No
NC31	Inland Rail Trail Destination Connections	Yes	Yes	Related	No
NC32	BRT: Palomar Airport Road (<i>Rapid 440</i>)	No	Partial	No	Yes

Projects from 'The Plan'

Plan ID	Plan Name	Inland to Coast	Mobility Gateway	Major North/South Arterials	Mobility Boulevard: San Marcos and Palomar Airport Road
NC33	Rapid 450	No	Yes	No	Yes
NC34	BRT: Vista Way	Partial	No	No	No
NC35	Camp Pendleton Access	Related	No	Related	No
NC36	Commuter Express: Palomar Airport to Kearny Mesa via Rancho Bernardo Transit Center	No	Partial	No	No
NC37	SR 76 SMART Highway Improvements	No	No	Related	No
NC38	Commuter Express: Riverside (Temecula) to North County	No	Partial	No	Related
NC39	SPRINTER Double Tracking	Yes	Yes	Related	Related
NC40	SPRINTER Service Extensions	No	Yes	Related	Related
NC41	Communication Backbone/Fiber	Partial	Partial	Yes	Yes
NC42	Connecting Communities Across Regional Spines	Yes	Yes	Partial	Yes
NC43	Regional Highway and Arterial TSMO, Regional Traffic Signal Management System	Partial	Partial	Yes	Yes
NC44	SPRINTER Grade Separations	Yes	Yes	Related	No
NC45	SPRINTER Electrification	Yes	Yes	Related	Related
NC46	San Luis Rey River Trail Extension	Partial	No	No	No
NC47	SPRINTER Station Access Improvemnets	Yes	Yes	Yes	Yes
NC48	BRT: SPRINTER Parallel	Yes	Yes	No	No