

2025 Regional Plan Project Type Glossary



Active Transportation

Bikeways and walkways on streets or new off-street trails.



Airport Connection

Future transit service upgrades to improve links between San Diego International Airport and our regional public transit system.



Arterials

Major streets in cities that move traffic quickly and connect to highways.



Bus Layover

Designated area where buses can wait between trips so drivers can take breaks, and where vehicles can be fueled, charged, or cleaned.



Circulator

A bus that comes frequently and stops at major local destinations in a specific area.



Direct Access Ramp (DAR)

A special highway entrance where buses, carpoolers, or people who pay a toll can directly enter managed lanes without having to merge from the right side.



Express Bus

Bus routes that connect suburban areas to major urban centers that have very few stops at major destinations.



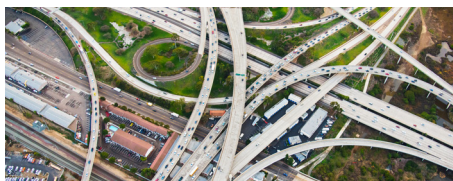
Freeway Connector

A ramp that connects one highway to another.



Goods Movement

Projects that help ship goods faster on highways and trains, and within ports and airports, while improving air quality.



Interchange

Where a freeway and a major road or other freeway cross each other.



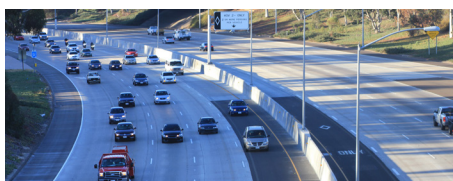
Local Bus

A bus route that travels around neighborhoods that are near one another.



LOSSAN Improvements

Making the railway that connects San Diego to Los Angeles and San Luis Obispo safer, faster and more efficient.



Managed Lanes (ML)

Separate highway lanes for multi-passenger transportation (like buses or carpools) or people who pay a toll.

Project descriptions describe total lanes before and after the project. Ex. "6F+2ML" means six freeway lanes plus two managed lanes.



Managed Lane Connector

Ramps that connect managed lanes on different freeways.



Microtransit/Flexible Fleets

On-demand public shuttle service for short trips within a neighborhood.

2025 Regional Plan Project Type Glossary



Mobility Hub

An area where many types of transportation connect (ex. public transit, bike lanes, or shuttles).



Multimodal Corridor Improvements

Projects that make all transportation on the same route more efficient, including walking, biking, transit, trains, and/or vehicles.



Neighborhood Electric Vehicle (NEV) Service

Small, on-demand electric shuttle available for short trips in a small area (ex. FRED San Diego).



Next Gen Rapid Bus

A bus route with limited stops that uses different infrastructure to get around traffic and speed up trips.



Operational Improvements

Help highway traffic flow: ex. adding merging lanes, truck lanes, upgrades to on- & off-ramps.



Otay Mesa East Port of Entry (OME POE)

A new U.S.-Mexico border crossing.



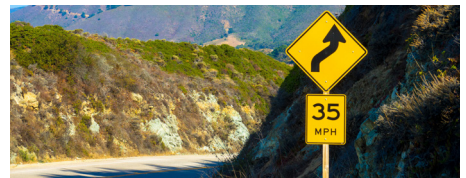
Regional Rail and Light Rail

(ex. on the Blue, Green, or Orange Line, SPRINTER, or COASTER) Projects that make rail trips more efficient: for example, separating rail tracks from car traffic with a bridge.



Reversible Managed Lanes

A managed lane that can change traffic direction depending on the time of day or traffic conditions.



Rural Corridor and Intersection Improvements

Highway safety upgrades: ex. adding a shoulder, straightening windy roads, improving connections between streets and highways



Shoulder Widening

Project that widens pavement on the side of a freeway for safety in case of emergencies.



Transportation System Management/Transportation Technology and Smart Systems

Projects that use data and technology to improve traffic flow, travel times, and transportation reliability.